

Hollingbourne & Hucking

July 2021



Church & Village News

www.hollingbournepc.co.uk

Parish Directory

The Clergy Team

Churchwarden	Christine Jones	688830
Bellringers	Nigel Baker (Tower Captain)	07778 691 343
	Pam Nash	880309

Borough Councillor

Patrik Garten, Kingswood House, Pitt Orad, ME17 3NR	807907
---	--------

Bourne Musicians

Beccy Stroud, 1 Musket Lane	880377
-----------------------------	--------

Cardwell Pavilion

07932 164839

Cricket Club

www.bearstedcricketclub.co.uk

Cubs

Jane Newsome	862558
--------------	--------

Doctor Yeomans Lane : Repeat Prescriptions 630415 / Appointments, etc.

Editor	737326
--------	--------

Mike Bedwell	734735
--------------	--------

John Ross	880353
-----------	--------

Hospitals:	Maidstone 729000	Eye, Ear & Mouth Unit 737080	729000
------------	------------------	------------------------------	--------

Preston Hall 710161	9am – 5 pm
---------------------	------------

Kent Messenger Correspondent

Maidstone Volunteer Bureau	Vacant
-----------------------------------	---------------

Ben Williams	01622 756662
--------------	--------------

Meadows Trust	07968.123165 or 880584
---------------	------------------------

Neighbourhood Contacts	June Pockett junepockett@hotmail.com 880763/07767.367611
------------------------	--

Parish Council Chairman	Adam Ward adandsar@tiscali.co.uk
-------------------------	----------------------------------

Vice Chairman	Simon Hulme 07808 300 840
---------------	---------------------------

Parish Clerk	Vickie Smith pchollingbourne@gmail.com 07856.180003/880526
--------------	---

Pre-School	Christine Judges 07864 065753
------------	-------------------------------

Police	PCSO Ryan Waring 101
--------	----------------------

Railway Enquiries	0845 748 4950
-------------------	---------------

Reading Group	Barbara Lloyd 880282
---------------	----------------------

Dawn Perry	880634
------------	--------

Royal British Legion	Derek Davison 880650
----------------------	----------------------

School	Mrs. Helen Bradley-Wyatt, Headteacher 880270
--------	--

Scout Group	Alan Poulton 843019
-------------	---------------------

Short Mat Bowls	Peter Lee 880580
-----------------	------------------

Village Hall	Barbara Tremble 880216
--------------	------------------------

Village Shop	Julie & Martin Woods 880338
--------------	-----------------------------

Women's Institute	Barbara Gibbs 880652
-------------------	----------------------

Sue Roberts	07867.691393
-------------	--------------

Hucking WI	Sharon Lee 07714.756354
------------	-------------------------

Kate Blacker	07760.905416
--------------	--------------

Magazine Contributions should be in by the 10th of the month latest to the Editor :

Carole Findlay, 1 Pimpernel Close, Bearsted, Kent ME14 4QQ. 01622.583636

Email: hollingbourne.parish.magazine.editor@hotmail.com For advertising please

contact Phil Smith at philip.smithsmith@btinternet.com

Magazine available on line at Hollingbourne Parish Council website

Hollingbourne Neighbourhood Drivers

Katie Brice	01622.880520
-------------	--------------

Christine and Nick Maynard	01622.880378
----------------------------	--------------

Barbara Tremble	01622.880216
-----------------	--------------

Pete Brown	07997.134771
------------	--------------

Jean Wellman	01622.880598
--------------	--------------

June Pockett (Coordinator)	01622.880763 /07767.367611
-----------------------------------	----------------------------

Life is for living

According to the experts, those of us who were children in the 1940s to the early 1980s probably shouldn't have survived, because: ... our baby cots were covered with brightly coloured lead-based paint, which was promptly chewed and licked. We didn't have child-proof lids on medicine bottles. When we rode on our bikes, we didn't wear helmets, just flip-flops, and had fluorescent clackers on our wheels. We would ride in cars with no seatbelts or airbags. We drank water from the garden hose. We ate dripping sandwiches. We shared one drink with four friends, from the same bottle. We would spend hours building go-karts out of scraps and then went top speed down a hill, only to find out we'd forgotten the brakes. We were allowed to leave home in the morning and play out all day, as long as we were back before dark. We didn't have X-boxes, play-stations, mobiles and there were no internet chat rooms – we had friends. We were allowed to play conkers. We played elastics and street rounders and sometimes that ball really hurt. We fell out of trees, got cut, broke bones and teeth, but there were no lawsuits. There were accidents, but we learned not to do it again. We made up games with sticks and ate live stuff and although we were told it would happen, none of that live stuff lived inside us forever.

We want to live life to the full, but so often we can't always do that. What's more, we've had to cope with a virus in a world-wide pandemic and we might say to ourselves, what next?

We might come to the conclusion that life isn't worth the living, but it is! We might consider all the restrictions we now experience as health and safety gone mad, but I'm sure the rules and regulations put in place are for our benefit, safety and well-being. With most things in life, we have choices to make. Some of these choices are made for us as we discover what we can and can't do, or what we should or shouldn't do, but we still have plenty to discover for ourselves.

I remember making a choice to follow the teachings of the Lord Jesus Christ at a young people's Christian holiday back in the 1970s. What, more rules, restrictions and regulations? Not at all. I discovered for myself a peace which passes all understanding, a freedom to be the person God wanted me to be and a desire to share this Good News with others. Jesus said, '**I have come in order that you might have life – life in all its fullness.**' I will always be grateful to the people who have helped me in making the decisions I have had to make and those who have provided encouragement and inspiration over the years.

Captain Graham Bibby

Team Missioner, North Downs Team



SERVICES 2020/21 (YEAR B)

JULY 2021

<u>4th July</u>	<u>Trinity 5</u>	
Services	Hollingbourne 11.00 am	Eucharist
Readings	Ezekiel 2:1-5; Mark 6:1-13	
<u>11th July</u>	<u>Trinity 6</u>	
Service	Hollingbourne 11.00 am	Eucharist
Readings	Amos 7:7-15; Mark 6:14-29	
<u>18th July</u>	<u>Trinity 7</u>	
Service	Hollingbourne 11.00 am	Eucharist
Readings	Jeremiah 23:1-6; Mark 6:30-4 & 53-end	
<u>25th July</u>	<u>Trinity 8</u>	
Service	Hollingbourne 11.00 am	Eucharist
Readings	2 Kings:42-end; John 6:1-21	

If you wish to attend a church service at All Saints Church you *MUST* register in advance with the Churchwarden – Christine Jones - 688830.

The Church will be open for Private Prayer between 10.00 am and 2 pm on Wednesday and Sunday.

Revd. Mark Pavey will be conducting a service online at 10.00 am each Sunday.

The following links are the links for Mark Pavey's services -

<https://www.youtube.com/channel/UC4KnCwLrj4ACApkv UEyXvg>

or if you are on Facebook -

<https://www.facebook.com/northdownschurches/>



LEEDS SERVICES

4 th July	Leeds	9.30 am	Communion
11 th July	Broomfield	3.30 pm	Well Dressing
18 th July	Leeds	9.30 am	Communion
25 th July	Kingswood	11.00 am	Family Communion

EDITOR'S NOTES

Well, I seem to have accumulated some more content this month. We have lots of information about the cricket being played at Hollingbourne's ground (just above The Dirty Habit), together with cricket coaching being held for 8-14 year olds in August. Do check on the Bearsted Cricket Club website to see when matches are being played at our ground. All supporters are always most welcome.

Events to note (some new) are a Police Surgery at the Village Hall at 10 am on Saturday, 3rd July; a Summer Sunset Social at Hollingbourne Meadows at 5 pm on the 3rd (check it is still on); the Kent Show has been cancelled, but there is a Summer Fayre on the 10th and 11th; The WI (again) has a meeting scheduled for the 20th; the Village BBQ is due to be held at the Lance Memorial Field on the 24th and, if you owe any tax, you need to pay HMRC by the 31st!

An early note is for the Rotary Cancer Research Walk on 8th August, starting at Harrietsham Church. Now is the time to start breaking in those new boots!

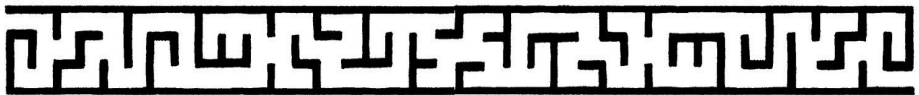
In the meantime, with holidays on hold, you can watch Wimbledon with a clear conscience.

Still hoping for some contributions regarding your three dreams after lockdown finally finishes.

I hope I have better news next month.

Carole Findlay

Hollingbourne.parish.magazine.editor@hotmail.com



GOOD NEWS, BAD NEWS

God says to Moses, "Moses, I have good news and bad news for you."

Moses asks, "What's the good news?"

God replies, "Moses, I shall visit plagues upon the Egyptians. Their rivers will run red with blood, frogs will infest their houses, lice will infest their bodies. I shall cause flies to swarm upon them. Their cattle shall die; boils will infect both man and beast. I shall cause hail to destroy their crops; and locusts shall devour anything green that is left in their land. Darkness will cover their land for three days and nights. I shall then lead you through the wilderness, until the children of Israel reach the Land flowing with milk and honey."

Moses replied, "That's GREAT, Lord! What could possibly be the bad news?"

"You, Moses, shall write the Environmental Impact Statement."



Ivy on your house is not really so bad after all

So says the Royal Horticultural Society (RHS).

In an effort to restore the plant's reputation, the RHS has been showcasing the species at its flagship garden in Wisley, Surrey. It hopes to set a new trend, and to get people to stop seeing ivy as 'the enemy.'

At Wisley you can now see 390 varieties of ivy, with a vast array of leaf shapes, sizes and colours. The RHS wants people to see that ivy can be an attractive and even eco-friendly addition to your home.

RHS experts say that ivy is a 'super plant' that not only has insulating benefits, but also offers habitats for a variety of wildlife, as well as being a food source for birds and pollinators during months of the year when there is very little else for them to eat.

<https://www.rhs.org.uk/press/releases/New-research-shows-ivy-is-the-most-effective-plant>

Neighbourhood Watch Stickers

Hollingbourne Parish Council has some Neighbourhood Watch window stickers.

If you would like a sticker, please contact the Parish Clerk on pchollingbourne@gmail.com



NEIGHBOURHOOD WATCH



GOOD NEWS FOR CRICKET IN HOLLINGBOURNE

(A Reprise of an Article publishes last year)

Many Hollingbourne locals would have been saddened by the closure of the village cricket club back in 2018, only a couple of years short of its 150th year anniversary. All sports clubs rely not only membership numbers but also on the dedicated and selfless support of volunteers and commitment of local people; sometimes unfortunately this cannot be found.

But all has not been lost. Following discussions between the Committees of Hollingbourne Cricket Club (HCC) and, local neighbours, Bearsted Cricket Club it was agreed that the latter would take on the Hollingbourne ground to provide extra facilities and offer continued cricket opportunities for Hollingbourne locals. Many of the HCC players, who still had a desire to continue playing, joined Bearsted CC to great success, with some also joining the BCC committee.

This new arrangement began with a cracking start in 2019, with the Hollingbourne ground being used once again for Kent County age group representative games, Bearsted Junior Cricket and a T20 competition. Probably not many in our village were aware of this.

Throughout 2019 and into 2020, Bearsted CC started to invest in some much-needed refurbishments to the pavilion and playing surface in preparation for further efforts and growth in 2020. However, none of us could have foreseen what was coming our way in 2020 which created challenges never previously experienced by small sports clubs, their members and of course the whole of the community!

Even during these times of social distancing and lockdowns, Bearsted CC continued to deliver coaching for young cricketers, in line with Kent Cricket and ECB return to cricket guidelines, at the ground and was making preparations for a healthier 2021. During the close season further improvements were made to the ground, with the entire square being refurbished, and it is hoped that, as normality returns over time, we will be seeing many more Kent County age group games taking place in the village, along with a planned increase in the number of junior and senior BCC coaching sessions and matches.

It is wonderful to know that cricket matches will continue in the village. It is hoped to publish, in the Village Magazine, the dates and times of games being played – full fixtures and news about the club and other events can be found on the Bearsted Cricket Club website (www.bearstedcricketclub.co.uk). The ground is situated a few hundred yards from the Dirty Habit on the Pilgrims Way (going east).

Do please support cricket in the village, in such beautiful surrounding, by watching matches, lending a hand and giving support to this venture.

DAVID PATTON

Chairman, Bearsted Cricket Club

UPDATE FROM HEAD OF GROUNDS ON REFURBISHMENT ACTIVITIES BY DAVID PATTON

Over the close season we have made some substantial investments in the grounds at the Green and at Hollingbourne.

So much was removed we found previously marked white lines from maybe 20 years ago!!

At the end of last season, the Bearsted Cricket Club committee took the decision to invest a substantial amount of money (GULP!) in some much needed and well overdue improvements to our playing surfaces and outfield. The coronavirus lockdowns, combined with a summer of hot and dry weather, meant that the Green had unsurprisingly become a focus of people's leisure time and had, therefore, been very well used by locals and those from further afield, which led to an increase level of wear and tear than usual.

Over in Hollingbourne, at our newly acquired second ground, a lot of time had been spent on much needed refurbishment of the pavilion during 2019/20, but it was clear that the square itself required a little additional TLC. Here our head of grounds, Simon Barker, provides an update on what the grounds work has been undertaken so far. More updates to come as we get close to the season and full growth and preparation is underway.

Bearsted Green

After many years Bearsted Cricket Club took the opportunity to renovate the square on the green. With help and guidance from JGC Sportsturf the decision was made to remove 1½ inches of thatch and previous years soil. So much was removed we found previously marked white lines from maybe 20 years ago!!



Once stripped a new table of 3 tons of Ongar Loam was laid and freshly dimple seeded with 100% ryegrass all of this done before the dreaded English weather would halt play.. final actions to put the square to bed with the largest blanket ever seen to give the seeds the best chance to thrive for us. But unfortunately the rain kept coming, and after coming out from under the duvet not as much as hoped had come alive.

So we put the blanket back on to allow the square a little more of a lie in and in the hope it would come alive... Finally we witnessed the awakening just in time for the winter, so after many hours brushing to help keep tidy on the few dry days, we now witness the full growth and revitalised square. It is time now to start the pre-season rolling and feeding to further green up for the coming season..

The Bearsted Green outfield

With the new addition of a drag mat and spike aerator you may well see the mower circling the green more often to thicken up the outfield so we can get even more stunning stripes to improve the look of the green for the community and, of course provide, a better and safer playing surface for the senior and junior members of the club.

The 'Hollies' (Hollingbourne Ground)

The work undertaken at the Hollies was not as drastic as that at the Green, and consisted more of a deep scarify designed to remove a number of years of thatch and moss. After the sheep had been migrated back to the upper fields, from their winter grazing, we could get the roller and brushes working on the new square. The first cut has come up outstanding already and with some more final grooming and some further feeding all is looking good for the start of the season.



Big thanks to Simon Barker for this update and to him and all the other volunteers who have committed so much of their own personal time to these refurbishment projects over the past 18 months.

Maintaining the Green and Hollingbourne, grounds and pavilions, is no small undertaking and we, of course, aim to make it as good for playing cricket as we can. But, of course, our efforts do also directly enhance the visual appeal of the Green for the local community and visitors to our village, and we hope to see many of you on the Green, and at Hollingbourne, to support the cricket or even just to marvel at Simon's stripes!

If you are green fingered, or carpentry minded, and would like to volunteer your time to help us continue to improve and maintain the stunning look of our Green and other facilities please do get in touch with the club (chairman@bearstedcricketclub.co.uk) or contact Simon Barker directly (you will find him most days on the Green and / or on a mower!).

As you prepare for the school holidays, remember this: children are natural mimics. They act like us in spite of all our attempts to teach them good

Our minister is still getting used to live streaming our church services. Last Sunday he invited us to join him digitally in prayer by saying firmly: "Let's bow our eyes and close our heads."

Once asked how many people worked in the Vatican, the Pope replied, 'Oh, about half.'



Hollingbourne Meadows Trust **News Bulletin July 2021**



The Trust relies totally on regular donations from members and specific funds from other organisations. It does not receive funding from the Government or the Local Authority.

As this bulletin is written, the lifting of the restrictions on the 21st June looks decidedly uncertain and the lifting may be delayed further and so please follow the published guidance from the government.

Summer Sunset Social - 3rd July 5pm

You are invited to come and join us in enjoying the late afternoon serenity, sunset, share a laugh and some social summer drinks in the Meadows. Fire pits, snacks and a donation bar. Everyone is welcome.

We'd love to have you join us, so, if you would like to come along, please text **Louise on 07711802422** or visit our **Facebook** page to view the event. Bring your own chairs/picnic rugs, marshmallows and drinking vessels.

We can't wait to see you.

The Trust is also supporting Hollingbourne Parish Council on the plans for a **summer picnic** at the Lance Memorial Ground on **Saturday, 24th July**, which will provide us all with the opportunity for a much-needed social gathering subject to government restrictions. The aim is to have an informal gathering where there will be a bar, food, entertainment and activities for all. More details will be released shortly and please check out the Parish website and Noticeboards and the Village Store for further information. The Trust will be there with a marquee in order to offer a warm welcome. We will love to hear from you about what you like and do not like about the Meadows and for you to share ideas that you have. Please come along and say hello.

We are still looking for a suitable replacement Finance Director to replace Liz Jordan, who has decided to step down. If you are, or you know of someone who would be, interested in helping the Trust with financial compliance or would just wish to be involved in the management and organisation of the Trust then please either contact a member of the Trust or post or email your details. Your valued input is much needed!

Please come and enjoy the Meadows but ensure that you still follow the guidelines in order to keep safe and healthy, keep the coronavirus under control and to avoid another lockdown. Do not forget to leave only footprints when you leave!

If you are not currently a Member or 'Friend of the Meadows' and would like to support this asset which is for the whole community or if anyone is interested in sponsoring a tree which would make a great present for a loved one, then please visit www.hollingbournemeadowstrust.co.uk or any member of the Trust. There is more information on the HMT website along with the details of other projects and this can be found on

www.hollingbournemeadowstrust.co.uk, on Facebook at <https://www.facebook.com/Project100HTML/> and there is also a website where donations can be made at <https://mydonate.bt.com/charities/hollingbournemeadowstrust>.



Hollingbourn Parish Council



**Kent
Police**

Police Surgery

The Windmill Village Hall

Saturday 3rd of July 2021

10 – 11 am

Our local Police Community Support Officer will be holding a Police Surgery in the village. Please come along and discuss any policing issues which may be affecting you or as an individual or as a community.

Please bring a face mask, meeting will be in the foyer or side meeting room.

Planning reforms blamed for Tory by-election loss

After the Conservatives lost the Chesham and Amersham by-election with a 25 percentage points swing, Cabinet ministers and senior party members have told Boris Johnson to rethink planning reforms that have been blamed in part for the result. One minister told *The Times*: "We need to tread carefully on planning. We say that communities will be involved but then they're not... The party knows we need to build more homes in this country. It's about how you take forward that shared vision with your communities".

Maidstone is currently in the final stages of its Local Plan Review. The Local Plan should give us a sound tool to manage development. The key word is "manage". It is not the first time that I refer to my job as an **elected administrator**. Central Government tells us, by their magic formula, how many houses we should build. Our MPs then tell us that we ought to use brown-field sites and, in any case, we should not build here....nor there...nor...best not at all in her constituency.....

Well, it may have escaped your notice that Maidstone's brown-field sites were used up years ago and there is only so much housing which we can push into the town centre. We must build houses by our masters' dictate. The Local Plan should give us some safeguards. If we promise to build 30,000 homes in the **least worst areas** then we have the tools to stop additional development in even more unsuitable areas – for now.

This strategy only works if we actively fulfil our annual housing supply target. If we don't, the Planning Inspectorate will ignore our fine Local Plan.

-----Please keep this brief explanation in a safe place, I shall return to it over the coming months -----

Bottom line, you may have noticed, your elected administrator's options are a fine balancing act between fail and fail. What my formidable opponent at the last local election needs to realise is, had he won the count, he would have found himself in exactly the same position. There is little wiggle room for your locally elected administrator. The message needs to be taken to our MPs.....and here my argument closes its circle: The Chesham & Amersham by-election is No Surprise.

The last Local Plan Maidstone relied on the option of dispersal, thus enlarging little villages and disturbing settled communities, let alone overstressing the existing infrastructure. Given the ever-increasing volumes of housing requirement, dispersal is not working.

Another alternative would be to build one or two brand new garden villages from scratch with fresh infrastructure and maybe even their own motorway exit.

That's where the proposal for a Lenham Heath garden village comes into the equation. I mentioned this in my previous newsletters.

If Lenham Heath should fail, the next site in line will be Marden, which has no feasible road infrastructure, or a site near Detling Aerodrome (Binbury Park). A developer has already a shovel-ready project lined up there, only waiting for MBC not to fulfil their housing quotas. This will be inside the AONB ! Planning permission there, by default or otherwise, would set a huge precedent for everybody in the North Downs.

The Detling proposal is only half the size of Lenham Heath. It is no alternative because it would still require a huge element of housing dispersal. But most of all: **If the AONB outside Stockbury is no longer safe, then neither will be Frinsted, Wichling, Bicknor, Wormshill, Hucking nor Otterden.**

Maidstone will end up with 30,000 (thirty-thousand) new houses in its next Local Plan period. Only 12 (twelve) houses of these are planned in my ward, and none of them in the AONB. That was my election promise, which I will do my best to keep; but this is only possible if Maidstone's politicians are brave enough to embark on the concept of a new garden village **in the least worse location.**

Nobody is greatly in favour of any major development in Maidstone. Unfortunately ,the country is facing a housing shortage, and Boris pledged to build 300,000 homes per year.

=====

If you put in for planning permission recently you might have noticed that I lodged a conditional call-in to your application. There is absolutely nothing to worry about !!!!

You may remember that I've been campaigning for a while against people installing cheap bright floodlights in the AONB. I note that many of those people are new arrivals from London who have no concept of the beautiful dark skies in the AONB.

I queried this issue with our Head of Planning and he told me that there is no law, which we could employ, to stop generally installations of unsuitable lights. The only way to place restrictions, is to attach conditions to new planning applications, if and when they come in. So, whether somebody bolts on a satellite dish or rebuilds their whole house, I now routinely seek to impose lighting conditions for any planning applications within the AONB outside those villages, which have street lights.

To force the officer's hands, I will do it by a conditional call-in, meaning that, if the officer won't attach conditions, the application must go to committee.

The conditions in my objections sound rather complicated and technical. Essentially the nationally-recognised guidelines for AONBs say that anything stronger than an old-fashioned 100W halogen spotlight is too bright. There is nothing to stop you installing a few of them or equivalent LED, as long as they are pointed downwards - as long as you are not suddenly planning to turn your yard into a football-stadium there shouldn't be any issue for you.

If you have any problems with your application(s) please let me know. I can also call-in applications in support, when the officer is minded to refuse, but I must do so within 21 days of the validation date.

PATRIK GARTEN

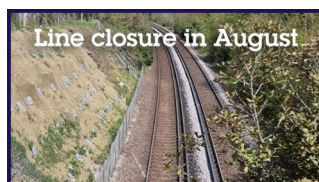
MBC Councillor for North Downs Ward (Conservative)

Phone: 01622-807907

patrikgarten@maidstone.gov.uk



Line closure between Ashford International and Maidstone East Saturday 7 August 2021 to Sunday 15 August 2021



We wanted to remind you about the essential improvement work that is taking place between Ashford International and Maidstone East this summer

Network Rail engineers will be reinforcing Bearsted cutting to prevent landslips, as well as improving drainage and signalling in the area. For a nine-day period in August, no trains can run and a replacement bus will be in operation

There will also be closures on **Saturday 3** and **Sunday 4 July**, and **Saturday 24** and **Sunday 25 July**. For all these dates **no trains** can run between Ashford International and Maidstone East stations, with a rail replacement bus service running instead.

Please check **journey planners** before you travel.

We want to do all that we can to let our customers know about the closure so that you can make alternative arrangements. If you have five minutes to take a short survey it will really help us to keep everyone informed.

Help them brush their teeth

Schools should teach younger children to brush their teeth properly. So says the Faculty of Dental Surgery at the Royal College of Surgeons of England.

Dentists say that teeth-cleaning sessions would ensure that those pupils who skipped the routine at home would at least be less likely to suffer major dental problems.

As one dentist explained: "In a year that has seen visits to the dentist disrupted... it is even more important that we take steps to protect



Do you enjoy singing?

Bearsted Choral Society is a four-part choir whose members enjoy singing a wide variety of both religious and secular music under the guidance of our conductor, Andrew Lowen.

We have some vacancies for new members and would welcome any sopranos, altos, tenors and basses who enjoy singing together and performing in concert 3 or 4 times a year. You will not have to audition.

We meet each Monday evening during term-time at Bearsted Methodist Church, 4 Ware Street, Bearsted, ME14 4PQ at 7.30 pm. Our next term starts on **Monday 6th September**, so why not come along and find out more about us and the music we are singing?

For more information, please contact bob_piggott@hotmail.co.uk or jennylovelock@btinternet.com.

We look forward to singing with you.



"Due to our failure to secure a holiday-relief organist, the next hymn will also be sung to the tune, *Chopsticks*."



Music Notes - July 2021

The expected relief for amateur musicians did not come in May. As I write, local choirs of more than six still cannot meet and all the plans for starting rehearsals and the possibilities of major Maidstone concerts in July have come to naught. Maidstone United Reformed Church, however, are taking advantage of the 'six persons' concession and will be holding their Summer Lunchtime concerts on Wednesdays in July, 1pm at URC Week Street, admission free, coffee available, retiring collection. Professionals, on the other hand, have been reprieved and things are moving on the national scale. The Leeds Castle annual concert is scheduled for 10th July and the Proms start on 30th July - with audience (they hope). You can buy Proms programmes from the large booksellers, including that one on the internet. Around 20 of this year's Proms will be filmed and made available on BBC iplayer, including the first two (30th and 31st).

Meanwhile I continue to search out anniversaries; here they are for July:

13th July – 70th anniversary of the death of **Arnold Schoenberg**, Austrian-American composer (1874-1951).

24th July – 50th anniversary of the death of **Alan Rawsthorne**, British composer.

26th July – 230th anniversary of the birth of **Franz Xavier Wolfgang Mozart**, Austrian composer, teacher and performer; youngest son of Wolfgang Amadeus Mozart.

28th July – 280th anniversary of the death of **Antonio Vivaldi**, Italian composer and violinist.

As possibly the least well-known, here is something about Alan Rawsthorne:

Born in 1905, Rawsthorne's parents discouraged his aims to be a professional musician and he tried and failed as a dentist, and then as an architect. In 1925 he finally enrolled at the Royal Manchester College of Music. After graduating, he spent two years pursuing his piano training with Egon Petri at Zakopane in Poland, and then, briefly, also in Berlin. On his return to England in 1932, he took up a post as pianist and teacher at Dartington Hall in Devon, where he became composer-in-residence for the School of Dance and Mime. In 1934 he left for London to try his fortune as a freelance composer. His first real public success arrived four years later with a performance of his *Theme and Variations for Two Violins* at the 1938 International Society for Contemporary Music Festival in London. The next year, his large-scale *Symphonic Studies* for orchestra was performed in Warsaw. The first in a line of completely assured orchestral scores, the *Symphonic Studies*, which can be heard as a concerto for orchestra in all but name, rapidly helped Rawsthorne establish himself.

Other acclaimed works include a viola sonata (1937), two piano concertos (1939, 1951), an oboe concerto (1947), two violin concertos (1948, 1956), a concerto for string orchestra (1949), and the *Elegy for Guitar* (1971), a piece written for and completed by Julian Bream after the composer's death. He also wrote many film scores including *The Cruel Sea* (1953) and *The Man Who Never Was* (1956).

And here is another music definition:

Orchestra– The result of musicians having discovered that there is safety in numbers.

**KENT
DOES**



KENT RECYCLES – DO YOU?

Are you confused about what plastics you can recycle? Kent Councils have teamed up with national recycling charity Pledge2Recycle Plastics (Part of RECOUP) to help reduce that confusion. The charity, that works to educate and advise citizens about plastics recycling, has created a dedicated website for Kent to provide information about plastics recycling and help answer your recycling related questions.

www.pledge2recycle.co.uk/kent

As part of this collaboration look out this year for competitions for local schools, community, sports and litter picking groups! Pledge2Recycle Plastics are hosting several competitions to help win recycled products, sports kit and litter picking kits.

[Find out more details by following the Pledge2WIN links on the website.](#)

YES PLEASE

Remember, you can recycle ALL bottles whether from the bathroom and kitchen as well as plastic packaging in the form of a pot, tub or tray.

All bottles should be empty when placed for recycling with the tops back on. Pots, tubs and trays should have the absorbent layer and film lid removed as these need to go into general waste.

It is important that ALL PLASTIC PLACED FOR RECYCLING is CLEAN, DRY AND LOOSE and NOT in any carrier or black bags.

NO THANKS

Please DO NOT put toothpaste tubes, pill packs, nappies, textiles, batteries, and food into recycling.

Textiles should go to specific banks either at community/retail/or Household Waste Centers

Carrier bags, bread bags and empty frozen veg packets can go to your local supermarket front of store collection please check at www.recyclenow.com/local-recycling.

Did you know

Sainsbury's superstores now take ALL flexible packaging in front of store collections including items such as crisp packets, biscuit wrappers and salad bags. Find out more www.about.sainsburys.co.uk/sustainability/plan-for-better/our-stories/2021/flexible-plastics.

Find out more

The team at Pledge2Recycle Plastics are happy to take your queries you will find them @pledge2recycle on social media or get in touch via the contact form on the website.

Calypso Cricket Coaching camp

Booking for the Bearsted CC hosted edition of the Calypso Cricket Coaching camp, which takes place from 9th to 12th August 2021 at the Hollingbourne Ground, is now open!

The four day camp, 9am to 3:30pm (book all four days or individual days), provides access to qualified ECB coaches plus other cricket related fun and games during a fun filled and active 4 days during the school holidays. The course is open to 8-14 year old boys and girls and you do not need to be a current member of Bearsted CC to take part, so spread the word! Bearsted CC will also be arranging an end of camp family BBQ to round of what will be an excellent week's cricket.

You can book online NOW by following this link: https://www.calypsocricketcoaching.com/service-page/bearsted-cricket-camp-4-days?referral=service_list_widget “



Can you sleep?

In the West, insomnia is thought to affect between 10 and 30 per cent of adults at any one time, according to the Economic and Social Research Council.

The group also says that a tenth of British adults regularly take some kind of sleeping tablet, with its accompanying risk of addiction.

Now The Sleep Charity, which campaigns to improve sleep support, warns that:

“While prescription drugs can help with short-term insomnia, and help to break a cycle of poor sleep, they don't tackle the root problem. They really just mask symptoms. With long-term insomnia, lifestyle changes usually need to happen, which is why cognitive behavioural therapy for insomnia is an effective treatment.”

PORTICO

Architecture
& Interiors

Architectural & Interior Design

Residential Extensions
New Builds
LA Planning & Listed Buildings

Commercial Alterations
Bldg Regs

Tel: 01622 880006 / 07785 544255

PORTICO ARCHITECTURE & INTERIORS

6 Tilefields, Hollingbourne,
ME17 1TZ

E-mail: info@portico-uk.com

Pest Control Services

All Pest Problems Dealt With Including:
Rats Mice Moles Rabbits Insects
Wasps Squirrels
Bee Swarms Removed

Discreet And Prompt Service
Fully Insured

Andy Pink
01622.884774 or 07761.559744

A D Pink Electrical

Local Family Business
All types of electrical installations
Full rewires to single sockets
Garden and security lighting
Fully insured
NICEIC Part P Domestic Installer
Tel 01622 884774/07761559744
Email: andypink1@aol.com



Enaid DESIGN

CURTAINS, BLINDS & INTERIOR DESIGN

Designer Fabrics • Little Greene Paint
Made-to-measure Curtains & Blinds
Re-makes & Alterations • Installation Service
Tracks & Poles • Re-upholstery & Loose Covers
Original Artwork • Hand-crafted Gifts
Haberdashery • Homemade Preserves • Local Honey
Local Fruit Juice • Kent & Sussex Teas & Coffee

SEWING LESSONS with *Can't Sew*



For a **FREE** consultation & measure call
Diane Sergeant on 07814.536173
or visit her at the Tin Shed, Hilltop Farm,
(next to Tea at Hilltop Tearoom)
The Heath, East Malling ME19 6JL
www.enaiddesign.co.uk

Spangles

Learn Spanish
Spanish Courses
for teens and children



on Saturdays at Detling Village Hall.
Native, insured & qualified teachers!

Call us 01622 735292 or email us
www.spangles.org info@spangles.org

Teaching in Kent since 2005!

LEEDS CASTLE

Summer has arrived at the Castle and I hope you have been enjoying the glorious sunny weather. In the Culpepper Garden we have an explosion of colour with allium, multi-coloured bearded irises and roses, all blooming and filling the air with scent. It is truly a lovely place to sit in the sun, listen to the bees buzzing and enjoy the floral display.

In line with the government's third stage of lockdown easing on 17th May, we have opened up indoors. It was great to stride across the drawbridge with BBC South East and open up the huge, ancient Castle doors to welcome the public for the first time since November. Visitors have enjoyed coming into the Castle again, and, during the past two weeks of glorious weather, the views from the Castle over the Moat have been exceptional.

17th May saw the reopening of the Castle View Restaurant, with its fabulous Castle views and it is serving breakfast, lunch and dinner. We have a new chef, who is creating delicious locally-sourced food, so do give it a try over the summer when you want an evening out.

We now have our Bed and Breakfast and Glamping tents running, with lots of happy customers enjoying the glamour of staying in the Maiden's Tower or the recently refurbished Stable Courtyard bedrooms. Glamping received a great boost last weekend as the site was listed by Saturday's issue of 'The Times' as one of the top 21 most luxurious in the UK.

Our owls and hawks have been enjoying the opportunity to stretch their wings and train again. The twice-daily Birds of Prey displays have now restarted, and the birds are, once again, thrilling people with their daredevil flying. We are also hosting a good number of our popular Experience Days where you can learn to fly an owl or a hawk.

Our baby Harris Hawk, Gallo, is growing well and is no longer a fluffy little chick, but rather a large, feathery teenager! His story really captured the public imagination and made it onto BBC Breakfast, the national radio stations and newspapers, including 'The Daily Telegraph' and 'The Evening Standard'. Another bird star this month was Pickles, the Whooper Swan, who celebrated his 30th birthday with a special seed and lard cake. Again, the story really took off and Pickles appeared on the BBC, Sky News, LBC Radio and many other outlets. It is all good publicity for the Castle as we approach the peak summer season.

On Monday we received confirmation that the Stage 4 lockdown easing will be delayed until 19th July. The immediate impacts of this are the postponement of the Leeds Castle Concert to 4 September and the continuation of the timed booking system and one-way system on site until at least 19th July. We hope to start opening things up again after this date and to run a successful season of summer weddings and functions, once social distancing requirements are lifted.

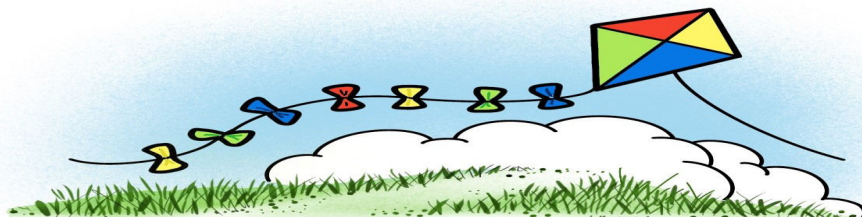
I am pleased to confirm plans for the '*Summer of Play*' activities, which will run

from July. We will be introducing new play installations in the field adjoining the Birds of Prey Centre, involving a Castle Kids Obstacle Challenge. We will also be launching a Big Book of Leeds Castle-y Challenges, involving 50+ activities that families can do when they visit the estate. More details on the website from July.

And finally, we are nearing completion of the restoration of Lady Baillie's bedroom suite. Designed by her interior designers Rateau, and later updated and changed by Stephane Boudin (who later designed some of the Kennedy White House rooms), the rooms are a stunning introduction to the elegant and glamorous Art Deco world of Lady Baillie and the wonderful house parties that she held. We intend to tell more of these stories as we plan to bring the Castle to life over the next few years, but, in the meantime, you can see these beautifully restored rooms from mid-July.

Helen Bonser-Wilton

Chief Executive



HOLLINGBOURNE PARISH COUNCIL MEETINGS

The Next Meetings are to be held on

Monday, 12th July

No Meeting in August

Monday, 14th September

At 7.30 pm

At The Cardwell Pavilion

Residents and representatives of the media interested in joining the meeting should contact the Clerk via pchollingbourne@gmail.com.

The Parish Council's aim is to include them within the meeting.*

There will be a 10 minute interval before the meeting to allow members of the public to speak

PLEDGE2RECYCLE PLASTICS – CUTTING THE CONFUSION

FREQUENTLY ASKED QUESTIONS

Why do I need to put the tops back on the bottles before recycling?

The tops go with the bottles to the reprocessor where they are cut up into flakes and the bottle and tops (which are different plastics) are separated before they are turned into pellets. The pellets made from the bottle themselves are then sent to either make new bottles. The pellets made from the tops are sent to go into garden furniture or items for construction such as piping or traffic cones.

How clean does my recycling need to be?

At the Materials Recovery Facility (MRF) all the mixed dry recycling is sorted by type (paper, cardboard, steel cans, aluminium cans, and plastics). This process involves a lot of complex machinery which gets covered in the residue and dirt that householders place in their recycling bins. This residue can cause machinery to breakdown. Many UK MRF's also have a section where material is hand sorted, so not a pleasant job if the material is covered in food remains. Remember also that the cleaner the recycling is the greater the quality and higher value the material will be to the recycler. It also keeps your bin clean if you empty, rinse and dry before recycling.

Can I recycle my bleach bottles?

Yes, make sure they are empty and put the top back on.

What do I do with the film lid on food, fruit, and vegetable punnets?

Remove the film lid and the absorbent layer and put these into general waste as these are not recyclable at the moment. Make sure the tray or punnet is empty, clean, and dry and recycle.

Where can I recycle my carrier bags, and bread bags?

Many UK Supermarkets are now taking carrier bags and bread bags etc. in their front of store collections. Please look for the OPRL label on your soft plastics and wrappings and check out our links on www.pledge2recycle.co.uk/kent for further information.

Should I stop using plastic packaging? Plastic packaging provides many benefits to products and compared to alternative materials it uses less energy to produce, reduces transport costs and CO2 emissions because it is lightweight, and significantly reduces the amount of fresh food waste by protecting it in a hygienic environment and extending its shelf life.

Did you know?

Bananas in a flexible bag extend their shelf life by 3 days

Plastic bags reduce waste of potatoes by two thirds

Cucumbers extend their life when wrapped in film by 14 days

Advanced plastic packaging extends the life of steak up to 10 days

Why do some brands still use plastic for food products – surely, we can use other materials such as glass?

Because it is lightweight, plastic packaging can save energy in the transport of packed goods. Less fuel is used, there are lower emissions and there are cost savings for distributors, retailers and consumers. For example, a yogurt pot made from glass weighs about 85 grams, while one made from plastic

weighs 5.5 grams. In a lorry filled with a product packed in glass jars, 36% of the load would be accounted for the packaging. If packed in plastic pots, the packaging would amount to just 3%. To transport the same amount of yogurt, three trucks are needed for glass jars but only two for plastic pots.

What can plastic packaging be recycled into?

Plastic packaging can be recycled into a wide variety of products including clothing, t-shirts; toys, chairs and tables; headphones; kitchen utensils; paint pots; car parts; cuddly toys; filling for duvets and sleeping bags; pens and pencils; building materials such as fencing, flooring, piping, etc; garden furniture; buckets and - of course - more plastic packaging! Drinks bottles can be made back into drinks bottles, milk bottles can also be made back into more milk bottles.

Why don't all Councils collect the same types of plastic?

Local authorities use different facilities and waste management providers to collect recycling materials from households and recycling points. Some of these can only accept specific plastic types and therefore residents are given different messages about what they can and cannot recycle in different areas. Local authorities also have contracts with waste management providers and changing or terminating these can be a long and costly process. However, the plastic industry would like to see all councils collecting the same types of plastic and will continue to promote this as best practice and the UK government is discussing the possibilities of consistent collections across the UK.

If you live in Kent and one of the 13 Kent Councils you are, able to recycle the same plastics packaging wherever you live in Kent.

Why does the Council keep asking us to recycle when I think I recycle everything I can?

Although most of us do recycle what we can when we can unfortunately the data tells us that nationally we only recycle 59% of all the bottles we could recycle and 34% of the pots, tubs and trays. This maybe because we are not sure if they are recyclable, or because they are dirty and we don't want to rinse/empty them, or because we take them out of the home for eating and drinking on the go and dispose of them in general waste wherever we happen to be, office, school, travelling etc. If we, can it is always best to take our empties home to recycle and make sure that we are not forgetting to recycle stuff from the kitchen or the bathroom, or forgetting about the ketchup and mayonnaise bottles. It all adds up.





Retirement living at its best, in Leeds, Kent.



A range of one and two-bedroom properties with wellness spa, café, bistro restaurant, cinema and more.

Sales office now open Monday – Friday, 10am-5pm.

Speak to our friendly village advisers for more information.

To visit safely, please call **01622 809 633** to make an appointment or visit **[lediangardens.co.uk](https://www.lediangardens.co.uk)**

Upper Street, Leeds, near Maidstone, Kent, ME17 1RZ



Pest Purge Ltd For all your pest problems



Rats, Mice, Squirrels, Bedbugs, Fleas
Wasps, Rabbits, Fox and Birds
No job too small, same day support
Talk to your local, friendly Pest
Control Business



call **01622 842481**
or **07758 615101**



Fire Wood

Logs

Kindling

Seasoned firewood

*suitable for all fires from
local coppiced woods.*

Please call Norman

07733.328715



**INTRUDER
ALARMS**



CCTV



**FIRE
ALARMS**



**ACCESS
CONTROL**

Unit 1B, Little Caring Farm, Caring Lane, Maidstone ME17 1TH
01622 880751 | www.prismalarms.co.uk | info@prismalarms.co.uk



CHIMNEY SWEEP

Peter Walsh

Hollingbourne based

01622 880958 or 07895 645318
peterchimneysweep@gmail.com

Power Sweeping

ICS Member

Fully Insured



Domestic Cleaning

We Clean So You Don't Have To!



*Competitive Pricing, Fully Insured, Reliable, Professional, Trustworthy
Available to do:
Household Cleans, End of Tenancy Cleans, Holiday Lets
Call us today!*

01622 880031

Office: Hollingbourne Maidstone Kent
www.phynixcleaning.co.uk



What happens when you look at your smartphone

Looking at your smartphone, or touching it, makes other people want to do the same to their smartphones.

A recent study at the university of Pisa calls it 'human mimicry', when people unintentionally change their physical behaviour to match those of people nearby.

The study found it happened to people in social settings that included work, restaurants, cinemas, gyms, waiting rooms, social parties, social meals, public parks and family environments.

Try it yourself, and see what happens to people near you a few minutes later....



Beware the cost of supermarket convenience stores

If you do your weekly food shop at a supermarket convenience store, you will be paying up to £320 more a year than if you had used one of the bigger branches.

According to a recent study by Which? Tesco Express costs £5.37 more a week, or £279 a year, while Sainsbury's Local stores cost £6.18 more a week, or £322 a year.

Tesco points to higher rents, rates and operating costs in Tesco Express stores, while Sainsburys points to 'a range of factors' including varying promotions.

Why your dog may be in danger

Dog thefts across the UK soared last year. The problem is now so serious that the government is to set up a pet theft taskforce to fight the organised crime gangs involved.

The taskforce will include officials from the Environment Department (Defra), the Home Office, the Ministry of Justice and the police. There will also be input from animal welfare experts.

Priti Patel, the Home Secretary, said: "Having callous thieves steal a much-loved pet is heart-breaking for families, and is a cruel crime." Stealing a pet is already a criminal offence, with the offender facing up to seven years in prison.

The police strongly advise pet owners never to leave their pet unattended in public, to vary their walking routines, and to take basic security steps at home, such as checking locks on doors and garden gates.



Hollingbourne Preschool Fundraising

Anybody within the village can help out in supporting the pre-school. It has served so many families with childcare over the years, it deserves a little help back.

Bag 2 School reuse and recycle good quality 2nd hand clothing, and the school will be paid for what is collected in weight.



It has been difficult to drop off unwanted clothes to the charity shops, mainly due to the COVID-19 restrictions, and this initiative may be very useful to the residents. It's time to clear out our wardrobes...

Donations to be dropped to the Pre-school by **Wednesday, 7th July, by 9 am.**



BRAEMAR

MORTGAGE SERVICES LIMITED

Local professional mortgage advice and recommendations to include...

Purchases/Re-mortgages/First-Time-Buyers
Buy-To-Let/Let-To-Buy/Right-To-Buy
Commercial Mortgages/Equity Release
Building & Contents/Life Protection
Critical Illness Protection/Income Protection

Please contact GREG on 07956 549488 or
Email: greg@braemarms.co.uk
CeMAP & CeRER qualified

Braemar Mortgage Services Limited is an independent mortgage adviser and registered with the Financial Conduct Authority – FCA No. 495806

Harrietsham Computers

Computer Problems?

Need an upgrade or a new machine?

Just want some extra tuition?

For local, friendly, experienced help, call

Mike Cuerden on 01622-859442 or

07963 020092

No call out fee

Reasonable rates

Private and commercial work

No job too small

Harrietsham Computers

Gary Tickle

**Conservation bricklayer/
builder**

**All building works
undertaken**

**Specialising in :-
Alterations, chimneys
Brickwork, lime mortar
& flint work**

**Mobile: 07710 096506
Home: 01795 881784**

Email: Gary-tickle@outlook.com



Church Road, Hucking, Kent ME17 1QT.

Tel : 01622.880272

Here at The Hook and Hatchet Inn we have a number of desirable amenities other than just our fabulous bar and dining area - paired with a wide selection of beers, ales, spirits and wines and also fantastic homemade pub food!

We are a dog friendly pub and also have an area for horses to be tied up and watered free of charge outside too!

With regular events and on site camping we pride ourselves on being able to offer a country pub experience different from the rest.

We look forward to welcoming you to our establishment soon .



ALTERNATE MONDAYS - MUMS MONDAY AND BINGO NIGHT

Bingo 7:30pm

Quiz Night 7:30pm

Mums Monday

A LUNCH DEAL WORTH SHOUTING ABOUT

Join us Monday – Friday before 5pm and get a free soft drink when you order one of our excellent selection of sandwiches, wraps, or generously filled jacket potatoes served with a side salad.

Or evening 2 course meal with 4 Mums get a free bottle of prosecco

TWO WHEELED TUESDAYS

From June 22nd. Curry and a pint £10 for all,
Free soft drink to riders.

PUPPY NIGHT

A free treat for every puppy 5-8pm and free soft drink for the owner with a meal.

OPEN MIC NIGHT

TBC

FISH FRIDAY

Every Friday 5:00pm - 8:00pm
Fresh Fish Dishes. Traditional Fish & Chips,
takeaway available. £12.50

OPENING HOURS

Monday -Thursday 12:00pm - 9:00pm

Friday 12:00pm - 11:00pm

Saturday 10:00pm - 11:00pm

Sunday 9:00 - 9:00pm

Food Finishes

8:00pm Sunday - Thursday

9:00pm Friday & Saturday

JUNE REOPENING

Monday 21st June

All reopen as normal!

LOCKLIFT PARTY

Saturday 26th June

SouthSound Disco ALL DAY

Iain Sparks and Friends LIVE at 4pm

Honesty is our best policy

The church service has just finished, and you are about to go home to read the latest edition of the parish magazine. You parked a bit carelessly because you were in a hurry and as you drive off you feel a slight bump. You stop and see a small scratch on the car parked next to you. It is the vicar's pride and joy! What do you do? Do you drive off and hope no-one saw. Then, when you get home you have a look round your car and see a bump on the other side where someone hit you!

As Christians we are told to be honest and admit our mistakes. When it happens to us, we feel outraged that someone could damage our property and not own up to it. When we do it to others, the right thing would be to leave a note and take care when parking next time. Honesty is the best policy. We should do to others as we expect others to do to us. If you hit another car, you can feel it and often hear an ominous noise. Sometimes it is difficult to know if you have caused any damage.

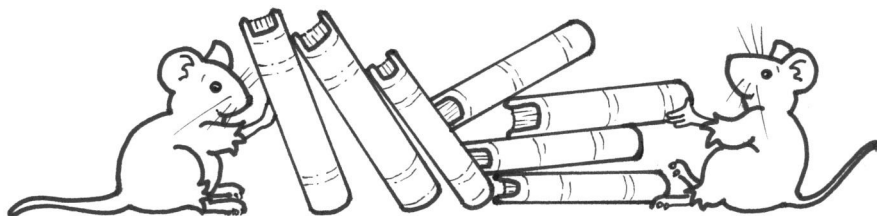
People do not, of course, always act honestly. Admitting mistakes is not common in our world. A small scratch or bump can be costly to repair and who wants to lose their no claim's bonus? Sometimes it is costly to admit a mistake, but as Christians we should be as open and honest as we expect others to be. We should stand out as different to other people and have a good conscience.



Can your child read?

School is out this month, but how much good did it do your child? More than 200,000 pupils will leave primary school this year without being able to read, according to recent unpublished figures by the government.

Now Boris Johnson has announced a 'four-year emergency' plan to help children catch up on their learning. One idea to help children get back up to speed is to bring in a 'citizens army' of teachers, including retired and supply



CW HANDY MAN

Chris wp collier
Property maintenanc & repairs
All your handy man needs
do not hesitate to call for a free estimate

07943575082

chriscollier108@yahoo.com



All roofing and lead work undertaken

Fascia soffit and guttering

Fencing

Patios

Driveways

Painting interior and exterior

All gardening work

All general property maintenance

For a friendly free estimate call Chris on

07943575082



Gill Turner Tucker

Solicitors

Incorporating Dundas & Duce

01622 759051

www.gillturnertucker.com

Colman House, King Street, Maidstone, Kent ME14 1JE



For you and your business,
a name you can trust.

Family

Wills, Trusts & Probate

Residential Conveyancing

Employment

Commercial Property

Company & Commercial

Claims & Disputes

To advertise in this
magazine, please
contact Phil Smith on

01622.880.680

[philip.smithsmith@](mailto:philip.smithsmith@btinternet.com)

[btinternet.com](mailto:philip.smithsmith@btinternet.com)

*when replying to an advertisement, please mention this
publication*

Sarah Willsey MCFHP MAFHP
Foot Health Professional



Mobile Foot Health Professional
service in the comfort of your own home

TREATMENTS

	PRICES
• Corns & calluses	
• Hard skin	£38 first appointment
• Verrucas	£35 follow up
• Ingrown toe nails	
• Thickened fungal nails	£33 over 65 first appt
• Cracked heels	£30 over 65 follow up
• Toe nail cutting and care	
• Diabetic and High Risk Foot Care and Advice	

Clinic: 01622 438550

Mobile: 07500 041535

Email: sarah@yourhealthyfeet.co.uk

Web: www.yourhealthyfeet.co.uk

Town & Country WINDOW CLEANING

Family business
Est since 1982

- Domestic
- Office
- Light Industrial
- Contractual

CALL STEVE ON
07747 334422

HOLLINGBOURNE PROPERTY SERVICES LIMITED

Building and Property
Maintenance Specialists

Electrical * Plumbing
*Decoration *

Heating and Boiler servicing

01622 880000

Email : hollingbourne@hotmail.co.uk

www.hpsltd.co.uk



CARPETS, VINYL & NATURAL FLOORING
ALL LEADING BRANDS SUPPLIED & INSTALLED

QUALITY, RELIABILITY & VALUE AS STANDARD

A FAMILY RUN BUSINESS FOR OVER 25 YEARS

SAMPLES BROUGHT TO YOUR HOME

CHOOSING CARPETS

01622 880596

mpfflooringltd@btconnect.com

Proud members of
Checkatrade.com
Where reputation matters

FULLY INSURED



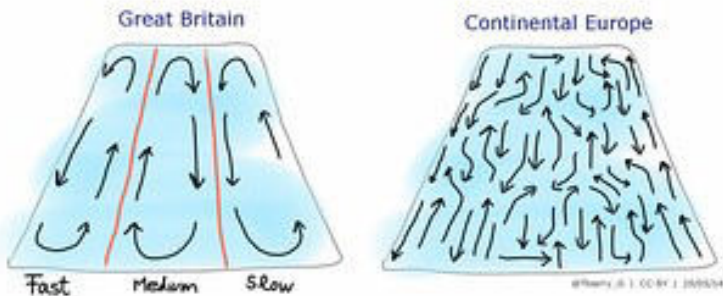
Can your child swim the length of a pool?

Before the pandemic, about a quarter of children could not swim the curriculum stipulated length when they left primary school. But now it is feared that by 2025, this could rise to three in five of all primary school children.

The figure comes from the All-Party Parliamentary Group (APPG) for Swimming and Swim England. With pools closed during lockdown and pupils not able to have face-to-face swimming lessons, fewer and fewer of them can swim at 25 metres competently, use a range of strokes effectively, or perform safe self-rescue in different situations.

The APPG says it will raise the issue with the Department for Education 'as a matter of urgency'.

Public Swimming Pool Etiquette



A small boy stunned his parents when he began to empty his pockets of coins. Finally his mother asked him where he had got all that money. "At church," the boy replied nonchalantly. "They have bowls of it there."

The sacristan was in a hurry to inform the congregation that their minister had recovered from an illness, so he put the following notice outside the church: *God is good. The vicar is better.*

All in the month of JULY

It was:

100 years ago, on **1st July, 1921**, that the Chinese Communist Party was founded.

Also **100 years ago**, on **10th July, 192**, that Belfast's Bloody Sunday took place. Protestant loyalists attacked Catholic enclaves and set fire to homes and businesses, sparking rioting and gun battles. At least 17 people were killed and more than 70 injured. 2,000 people were left homeless.

Also **100 years ago**, on **30th July, 1921**, that the hormone insulin was discovered by Frederick Banting and Charles Best, at the University of Toronto.

80 years ago, on **19th July, 1941**, that British Prime Minister Winston Churchill launched his 'V for Victory' campaign.

75 years ago, on **22nd July, 1946**, that the King David Hotel bombing took place in Jerusalem. The Irgun (a militant right-wing Zionist group) bombed the hotel which housed the British administrative headquarters for Palestine. 91 people were killed.

60 years ago, on **1st July, 1961**, that Diana, Princess of Wales, was born. (Killed in a car crash in 1997).

Also **60 years ago**, on **2nd July, 1961**, that Ernest Hemingway, American novelist and short story writer, died. Winner of the 1954 Nobel Prize in Literature. Best known for *For Whom the Bell Tolls*, *A Farewell to Arms*, and *The Old Man and the Sea*. (Suicide)

40 years ago, on **4th July, 1981**, that the Toxteth riots broke out in Liverpool.

Also **40 years ago**, on **17th July, 1981**, that the Humber Bridge, linking Yorkshire and Lincolnshire, was officially opened. It was the world's longest single-span suspension bridge at that time.

Also **40 years ago**, on **29th July, 1981**, that the marriage of Prince Charles and Lady Diana Spencer took place at St Paul's Cathedral in London.

25 years ago, on **5th July, 1996**, that the first cloned mammal was born. Dolly the sheep was born at the Roslin Institute in Edinburgh. (Died 2003)

15 years ago, on **15th July, 2006**, that Twitter, the micro-blogging social network, was launched.

10 years ago, on **23rd July, 2011**, that Amy Winehouse, British soul/R&B/jazz singer and songwriter died. (Alcohol poisoning, aged 27).

A Sunday School teacher asked her class why Joseph and Mary took Jesus with them to Jerusalem.

A small child replied: "They couldn't get a baby-sitter."

Weald Of Kent Rotary Club Cancer Research Charity Walk

Having been forced to cancel the North Downs' Walk last year for the first time in its 35 year history the Rotary Club of the Weald of Kent is determined that it will go ahead on 8 August 2021 and is planning accordingly. The walk has in the past raised over £500,000 for various charities and local causes.

The main charity being supported is Cancer Research, however 50% of sponsorship money can be donated to a walker's choice cause, if you can think of a group of people such as a Parent Teacher Association / School Group or other voluntary group in your area who would be interested in participating please do send on to them.



The poster is for 'The Cancer Research UK North Downs Walk'. It features a blue banner at the top with the title in white. Below the banner, the date 'Sunday 8 August 2021' and location 'Harrietsham Church, ME17 1AX' are listed in pink. The organizing body 'Rotary Club of the Weald of Kent' is in blue. Two yellow gear icons flank the text 'Choice of 1, 3, 6 or 9 miles' and 'Start between 9:00 and 11:30am'. A light blue box contains the text 'You can donate 50% of your sponsorship money to a cause of your choice'. Registration details are provided below. At the bottom, logos for 'Sponsored by The Family' and 'In aid of CANCER RESEARCH UK' are shown, along with a 'FR REGULATOR' logo and the slogan 'Together we will beat cancer'.

**The Cancer Research UK
North Downs Walk**

Sunday 8 August 2021
Harrietsham Church, ME17 1AX

Rotary Club of the Weald of Kent

Choice of 1, 3, 6 or 9 miles
Start between 9:00 and 11:30am

**You can donate 50% of your sponsorship
money to a cause of your choice**

To register, visit www.wealdofkentrotary.org.uk
or call 07519320919

Sponsored by **The Family**

In aid of **CANCER RESEARCH UK**
Together we will beat cancer

FR **REGULATOR**

Thoughts on Holidays

Holiday: an all-expense tour

Holiday: something you take when you can't take what you've been taking any longer.

The older you get, the tougher it is to lose weight before you appear in a swimsuit, because by then your body and your fat are really good friends.

Why is it called tourist season if we can't shoot at them?

Why don't sheep shrink when it rains? (A question for anyone holidaying in the Lake District or Wales.)

If flying is so safe, why do they call the airport the 'terminal'?

Why didn't Noah swat those two mosquitoes when he had the chance?

I wonder how much deeper the ocean would be without sponges.



CASTLE VIEW RESTAURANT

— LEEDS CASTLE —



"The Loveliest Castle in the World"

The oak-beamed setting of Castle View Restaurant at Leeds Castle offers delicious meals served in a relaxed atmosphere, enjoyed with spectacular views across the terrace to the magnificent Castle. Parking is free and an entrance ticket to Leeds Castle is not required to dine in the evening.

To book a table online visit
leeds-castle.com/restaurant or call 01622 767819

@CastleViewRestaurant @CV_Restaurant @CV_Restaurant



CLEANING, SUPPLYING & FITTING OF CARPETS IN YOUR AREA & ALL TYPES OF FLOORING

- Leather & Upholstery Cleaning
- Stain Resistant Treatments • Flame Retardant Treatments • Persian & Oriental Rugs • Curtains Cleaned • Hard Floor Maintenance • Restore & Sand Floors

A FAMILY RUN BUSINESS
WITH A REPUTATION
FOR RELIABILITY
& PROFESSIONAL
EXPERTISE



www.austinservices.co.uk

Flooring and Cleaning Specialists



Lenham Ballet School

R.A.D. Ballet

I.S.T.D. Tap & Modern

3 years to senior level

Adult Tap & Street Dance

01622 850329

More than a ballet school

www.lenhamballetschool.co.uk

***Compassionate and caring service
For the bereaved day or
night***

Michael Lawrence

Funeral Director



Rik Moore

6 Marlborough Parade, Beverley Road, **Barming**, Maidstone, ME16 9JN.

Tel: 01622 920300

barming@familyfuneralservice.net

Karan LeQuelenec

4 Cavendish Way, **Bearsted**, Maidstone, ME15 8PW.

Tel: 01622 920305



Please take my money

Have you ever tried to use cash in a shop, and been refused? That happened to more than a third of us last year.

But now, in response to widespread protest, supermarkets and high street shops have promised that they will continue to accept cash. Aldi, Asda, Co-op, John Lewis, Lloyds Pharmacy and Waitrose have all joined a pledge organised by the consumer group Which? to protect customers' choice.

Which? is now asking the government to set out when it will introduce laws protecting access to cash, which the Treasury promised in March 2020. A treasury spokesman said: "We remain committed to further legislation to protect cash."

Could you live happily without the BBC? Just try it for two weeks.

That was the recent challenge of the corporation's outgoing chairman, Sir David Clementi, to a group of critics who said they resented the licence fee.

Apparently, nine days later, two thirds of the critics had changed their mind and said that the licence was worth every penny. Sir David observed that when "things that they took for granted are removed from them, they realise how valuable the BBC is."

So he encourages anyone else who thinks that the license is not worth £3 a week, to try life without the BBC. "I think that most people would find it very hard to cope."



CARDWELL PAVILION

**FOR THAT SPECIAL PARTY OR
MEETING. WE CAN CATER
FOR YOUR NEEDS**

Please call
07932.164839

EDIFY
Counselling & Training

Jay Ford

MACC Accredited - Dip Couns
Cert Dip Supv

07788 972623
edify.ct@btinternet.com
www.edifyct.com

Play therapy available for under
16 year olds with consent.
Corporate Training.



PROUD TO BE SERVING THE
COMMUNITY SINCE 1965

A.W.COURT
FUNERAL DIRECTORS



Your fully independent, family owned,
Funeral Directors, serving the local
community with compassion and the highest
standards of service and professionalism.

With our 24-hour emergency service,
we are only a telephone call away.

At the earliest stage possible, you will
speak directly with one of our experienced
Funeral Directors, who will be there to help,
support and guide you through the whole
of the funeral process.

Golden Charter 
Funeral Plans

Headcorn Road, Grafty Green, Maidstone,
Kent ME17 2AP.
01622 850840

Email – enquiries@awcourt.com
Website – www.awcourt.com

A.W. Court is a Trading Division of
West & Coe Ltd, 602 Rainham Road South,
Dagenham, Essex RM10 8YP.




The Rectory
St James the Least of All



My dear Nephew Darren

Thank you for the kind offer of your old computer, but I do not want it. I know you find it a fundamental basic of daily life, but I do not, and I intend to keep things that way.

This is despite the fact that our diocesan office now takes it for granted that all of us clergy have a computer. Indeed, the diocesan secretary and I have had several awkward phone calls upon this very subject. He can't believe that I really don't have one, and suspects that I am simply hiding my email address from him so that he cannot send me the daily diocesan briefings, weekly questionnaires, and constant notification of all sorts of meetings and training days. But I remain firm: I have survived in ministry for nearly 50 years without a computer, and I don't intend to change now. When he gets tetchy with me, I take the high moral ground and remind him that St Paul did not have a computer.

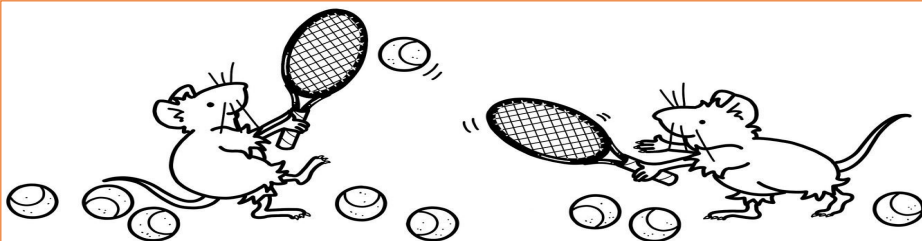
Besides, it would not end with just a computer. Next, I would be obliged to get a printer and then ink cartridges and then maybe some sort of virus would attack me. As I have no idea about any of this, I might have to allow someone into the vicarage to sort it out, and even worse, I might even have to pay them. My money can be far more usefully spent on good claret.

Being without a computer also saves me much aggravation. From what I can gather, most computer owners spend significant parts of their lives either trying to get their machine to do something that it refuses to do, or else getting help from someone in a remote part of the world who speaks a jargon only distantly related to English, who assures you that whatever you did, it would have been better if you hadn't.

So I have decided that should I ever REALLY need to use a computer for something, I will visit our local primary school and get a six year-old to do the job for me, which they do with effortless efficiency, speed and accuracy.

Your loving uncle,

Eustace



VILLAGE DIARY

July

3 rd	10.00 am	Police Surgery	Village Hall
	5.00 pm	Summer Sunset Social	Hollingbourne Meadows
4 th	11.00 am	Eucharist	All Saints Church
		Thank You Day	
10 th /11 th	9.00 am	Kent Country Summer Fayre	Kent Show Ground
11 th	11.00 am	Eucharist	All Saints Church
12 th	7.30 pm	Parish Council Meeting	Cardwell Pavilion
14 th	12.10-12.40 pm	Mobile Library	Village Hall
18 th	11.00 am	Eucharist	All Saints Church
20 th	7.45 pm	W.I. Meeting	Village Hall
24 th		Hollingbourne Village BBQ	Lance Memorial Field
25 th	11.00 am	Eucharist	All Saints Church
31 st		Tax Payments Due	

August

2 nd		Bank Holiday	
8 th	9-11.30 am	Start of Rotary Cancer Research Walk	Harrietsham Church
11 th	12.10-12.40 pm	Mobile Library	Village Hall
		No W.I. Meeting	
30 th		Bank Holiday	

September

8 th	12.10-12.40 pm	Mobile Library	Village Hall
14 th	7.30 pm	Parish Council Meeting	Cardwell Pavilion
21 st	7.45 pm	W.I. Meeting	Village Hall
?		Garden Society Autumn Show	

October

13 th	12.10-12.40 pm	Mobile Library	Village Hall
?		Garden Society Annual Supper	
11 th	7.30 pm	Parish Council Meeting	Cardwell Pavilion
19 th	7.45 pm	W.I. Meeting	Village Hall
31 st	2.00 am	Summer Time Ends	

November

8 th	7.30 pm	Parish Council Meeting	Cardwell Pavilion
10 th	12.10-12.40 pm	Mobile Library	Village Hall
16 th	7.45 pm	W.I. Meeting	Village Hall
20 th	7.30 pm	W.I. Barn Dance	Village Hall
21 st		Stir Up Sunday	

December

8 th	12.10-12.40 pm	Mobile Library	Village Hall
13 th	7.30 pm	Parish Council Meeting	Cardwell Pavilion
14 th	7.45 pm	W.I. Christmas Party (TBC)	Village Hall

If you wish to attend a church service at All Saints you **MUST** register in advance with the Churchwarden – Christine Jones - 688830.

New additions in red.

Please send information for Village Diary and Regular Meetings to

Carole Findlay 01622.583636 hollingbourne.parish.magazine.editor@hotmail.com

REGULAR MEETINGS

After school Club:

Schooldays to 6 pm Cardwell Pavilion

Bellringing Practice

Mondays 7.30 - 9.30 pm All Saints Church Tower

Bourne Musicians (3 months - 5 years):

Fridays 9.30 - 11 am Village Hall

Brownies:

Wednesdays 6.00—7.15 pm Cardwell Pavilion

Cubs:

Fridays 6.30 - 7.45 pm Kingswood Scout Hut

Explorers:

Thursdays 7.00 - 9.00 pm Kingswood Scout Hut

Hucking WI

3rd Thursday 7.00 pm Little Budds Farm

Mobile Library

Wednesdays (fortnightly) 11.55 am – 12.25 pm Village Hall

Parish Council:

2nd Monday (except August) 7.30 pm Cardwell Pavilion

Pilates Classes

Thursday mornings Village Hall

Pre-School:

Every School Day 9.15 am – noon Cardwell Pavilion

Reading Group :

Monthly **Contact:** Barbara Lloyd 880282
Dawn Perry 880634

School Terms **2021**

Term 6: 7th June - 16th July

Term 1: 1st September—22nd October

Term 2: 1st November—17th December

2022

Term 3: 4th January—11th February

Term 4: 21st February—11th April

Term 5: 19th April—27th May

Term 6: 6th June—22nd July

Scouts:

Wednesdays, 7.00 – 9.00 pm Kingswood Scout Hut

Short Mat Bowls:

Mondays (not 2nd) 7.30 – 9.30 pm Village Hall

Thursdays 7.30 – 9.30 pm Village Hall

WI Meetings:

3rd Tuesday (Not August) 7.30 pm Village Hall

Other Tuesday (July-September)
Boules 6.30 pm Cardwell Pavilion

Carole Findlay at hollingbourne.parish.magazine.editor@hotmail.com

Advertising space is sold in good faith. No responsibility can be taken for the quality of goods or services offered.



Sheds and Shelters Ltd

Hollingbourne Maidstone Kent

Manufacturer of all types of
garden buildings

All buildings made to order
Prices inc VAT, Delivery &
Erection



Tel. 01622 880031
www.shedsandshelters.co.uk

How climate change could affect your cup of tea

Now here's something that will send you straight to your kitchen to put the kettle on: the Great British cup of tea may not taste quite so good in the future.

It seems that extreme weather and rising temperatures could lead to inferior leaves in the future, according to Christian Aid.

Kenya, the world's foremost exporter of black tea, is now affected by erratic rainfall, floods, droughts, and rising temperatures. India, Sri Lanka and China, also major tea producers, face climate change problems as well.

Climate change has been predicted by some as likely to cut production in Kenya's best tea-making areas by as much as a quarter by 2050. Even areas of only average growing conditions could see production fall by 39 per cent.

As one tea farmer in Kenya's Western Highlands, explained: "We cannot predict seasons anymore. Temperatures are rising, rainfall is erratic, often accompanied by unusual hailstones and longer droughts. If this continues, it will make growing tea much harder."

Any opinions expressed in this magazine are those of the writers and do not necessarily reflect the positions of the Editor or Parochial Church Council. We reserve the right to edit, and the right not to print: no reason will be given. Contributions will not be printed anonymously.



THE ADVENTURE AWAITS!

We are excited to announce the launch of our brand-new dining spots, the **Adventure Shacks**, this **July**.

The shacks are available to book at 9 hosting pubs. Dine in a tropical paradise in the **Tiki Shacks**, sit amongst a magical woodland in our **Secret Garden Shacks**, or head shoreside and experience our colourful **Beach Shacks**.

For more details or to **book** an Adventure Shack, head to **elitepubs.com/adventure-shacks**.

Upper St, Hollingbourne, ME17 IUW
01622 880880



WOODS OF HOLLINGBOURNE

52 EYHORNE STREET, HOLLINGBOURNE, ME17 1TS

Tel : 01622.880.338

WE are SERVING:

- FRESH, LOCAL PRODUCE AND CONVENIENCE ITEMS
- FINE WINES, SPIRITS AND CRAFT BEERS

TO FIND OUT MORE VISIT:

WWW.WOODSOFHOLLINGBOURNE.CO.UK

OPEN	MONDAY / TUESDAY	8 AM - 2 PM
	WEDNESDAY- SATURDAY	8 AM - 6 PM
	SUNDAY	8 AM - 1 PM

As a result of the unfolding Covid-19 crisis, we currently prioritising the supply of fresh, local products to members of Hollingbourne and the surrounding community. We are currently receiving deliveries of

- Fresh baked bread and cakes
- Milk and dairy products
- Fresh meat from Doughty Butchers
- Local free-range eggs
- A range of Fruit and Vegetables has been significantly increased

We are also offering a FREE local delivery service (3 mile radius) for those who are self-isolating or those who are unable to leave their property.

CAR PARKING AVAILABLE BEHIND THE
WINDMILL PUB