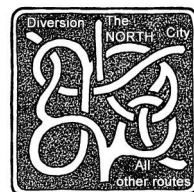
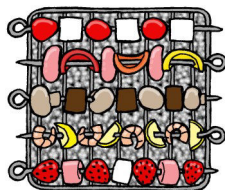


Hollingbourne & Hucking

July 2022



LEEDS CASTLE AND HOLLINGBOURNE GARDEN SOCIETY



IT IS

150 YEARS SINCE THE FIRST

HOLLINGBOURNE SUMMER FLOWER SHOW

PLEASE COME AND JOIN US ON

SUNDAY 3RD JULY 2022

TO CELEBRATE WITH

A FLOWER SHOW & CREAM TEAS

Hollingbourne Village Hall

2.00 – 4.00 pm

Flowers : Fruit : Vegetables : Floral Art & Baking

HAVE A CHAT : ENJOY A DELICIOUS CREAM TEA

STALLS AND RAFFLE

Exhibits welcome from members & non-members

Full details & Schedule on website ichgardensociety.co.uk

or contact Pat Bristow on 01622 880457



Church & Village News

www.hollingbournepc.co.uk

Parish Directory

The Clergy Team

Team Vicar	Revd. Rob Tugwell	01622.630598
Churchwarden	Christine Jones	688830
Bellringers	Nigel Baker (Tower Captain)	07778 691 343
Borough Councillor	Patrik Garten, Kingswood House, Pitt Orad, ME17 3NR	807907
Bourne Musicians	Beccy Stroud, 1 Musket Lane	880377
Cardwell Pavilion		07856.180003

Cricket Club

www.bearstedcricketclub.co.uk

Cubs

Jane Newsome 862558

Doctor Yeomans Lane : Repeat Prescriptions 630415 / Appointments, etc. 737326

Downs Mail Editor 734735

Football Club Roseacre Raiders Football Club roseacreraidersfc.teamapp.com

Garden Society John Ross 737080

Hospitals: Maidstone 729000 Eye, Ear & Mouth Unit 729000
Preston Hall 710161 9am – 5 pm

Kent Messenger Correspondent

Vacant

Maidstone Volunteer Bureau 01622 756662

Meadows Trust Ben Williams 07968.123165 or 880584

Mid-Kent Arts Society John Holley jgholleyberry@icloud.com

Neighbourhood Contacts June Pockett junepockett@hotmail.com 880763/07767.367611

Parish Council Chairman Simon Hulme 07808 300 840

Vice Chairman Adam Ward adandsar@fiscali.co.uk

Parish Clerk Vickie Smith pchollingbourne@gmail.com 07856.180003/880526

Pre-School Christine Judges 07864 065753

Police PCSO Shiron De'Rose 101

Railway Enquiries 0845 748 4950

Reading Group Barbara Lloyd 880282

Dawn Perry 880634

School Mrs. Helen Bradley-Wyatt, Headteacher 880270

Scout Group Alan Poulton 843019

Short Mat Bowls Peter Lee 880580

Village Hall The Windmill 889000

Women's Institute Barbara Gibbs 880652

Mary Henderson 734370

Hucking WI Sharon Lee 07714.756354

Kate Blacker 07760.905416

Magazine Contributions should be in by the 10th of the month latest to the Editor :
Carole Findlay, 1 Pimpernel Close, Bearsted, Kent ME14 4QQ. 01622.583636
Email: hollingbourne.parish.magazine.editor@hotmail.com For advertising please
contact Phil Smith at philip.smithsmith@btinternet.com Subscriptions £5.00 p.a.

Magazine also available on line at Hollingbourne Parish Council website and
in All Saints Church.

Hollingbourne Neighbourhood Drivers

Katie Brice 01622.880520

Christine and Nick Maynard 01622.880613

Barbara Tremble 01622.880216

Pete Brown 07997.134771

Jean Wellman 01622.880598

June Pockett (Coordinator) 01622.880763 /07767.367611

'To be a pilgrim'

Our churches in the Pilgrim's Way group are a magnet for walkers. But not just those who like to take a leisurely stroll or those in need of a bit of exercise. We are very fortunate that we live close to the Pilgrim's Way. I must admit that, before Janette and I moved here, I didn't know much about how you can take time making the journey from Winchester to Canterbury (153 miles) on the Pilgrim's Way or an alternative route from Southwark to Canterbury (90 miles) along the Becket Way.

Nowadays, we see and hear stories about those undertaking these journeys in books and magazines. Television programmes follow celebrities on various routes of pilgrimage around the world, as they try to discover something about themselves they didn't already know. I have met quite a few individuals, couples and groups making these journeys over the past few years when they've called into one or more of our beautiful buildings.

Pilgrimage is a meaningful journey to a sacred place. It provides the opportunity to step out of the non-stop busyness of our lives, to seek a time of quiet and reflection. It gives us the chance to 'walk through' those issues that we have on our minds, whatever they might be. It is a time of simply 'being' rather than always 'doing'.

Pilgrimage can also be a highly sociable activity, allowing us to enjoy the company of others we meet on the road. It gives us the chance re-energise mentally, physical and spiritually. And it allows us to reconnect with our cultural heritage and the natural world - as well as to refresh our faith or seek spiritual direction.

People go on pilgrimage for as many reasons as there are pilgrims. And you don't have to be religious to go on pilgrimage!

Often people go on pilgrimage when they are at a crossroads in their lives, when undergoing a change in their life's direction or relationships. Others may be in search of a deeper spirituality, healing and forgiveness. Or it may be that pilgrimage marks a special birthday, retirement or other occasion for giving thanks. It's also a great adventure with the chance to meet new people and see new places.

I suppose you could say that we are all pilgrims on a journey through life. The years come and go, so it's good to stop and consider where we are heading. July marks the beginning of the second half of the year. For me, that means yet another birthday, a reminder that time and life never stands still. I've heard some people say how quickly this year seems to be going. We spend time planning events, holidays, special occasions and then before we know it they are over and become a memory. I wonder how the Queen and those who organised her long weekend of celebrations for the Platinum Jubilee felt once the dust had settled on an amazing time for many of us? It's good sometimes to take time to reflect on where we are and on what has gone and then we can set new goals, make new plans and look to the future.

SERVICES 2021/22 (YEAR C)

JULY 2022

3rd July **3rd Sunday after Trinity**

Service Hollingbourne 11.00 am Family Service

Readings Habakkuk 2: 1-4; John 20: 24-29

10th July **4th Sunday after Trinity**

Service Hollingbourne 11.00 am Eucharist

Readings Deuteronomy 30: 9-14; Luke 10 : 24-37

17th July **5th Sunday after Trinity**

Service Hollingbourne 11.00 am Family Service

Readings Genesis 18: 1-10a; Luke 10: 38-end

24th July **6th Sunday after Trinity**

Service Hollingbourne 11.00 am Family Service

Readings Genesis 18: 20-32; Luke 11: 1-13

31st July **7th Sunday after Trinity**

Service Hollingbourne 11.00 am Eucharist

Readings Ecclesiastes 1: 2, 12-14, 2: 18-23; Luke 12: 13-21



LEEDS SERVICES

3 rd July	Leeds	9.30 am	Prayers
10 th July	Broomfield	3.30 pm	Well Dressing
17 th July	Leeds	9.30 am	Worship & Communion
24 th July	Kingswood	11.00 am	Family Communion

How is your pilgrimage through 2022?

God of our pilgrimage, you have given us a desire to take the questing way and set out on our journey. Help us to keep our eyes fixed on Jesus, that whatever we encounter as we travel, we may seek to glorify you by the way we live. Amen.

Captain Graham Bibby
Team Missioner, North Downs Team.

EDITOR'S NOTES

Well, wasn't the beginning of June busy! Kicking off with the lighting of the Beacon on Millenium Green on Thursday, 2nd, and the wonderful Jubilee Lunch on Sunday, 5th. Small reports on both. Apologies for lack of photos of the lunch, but I haven't properly worked out how to download photos from the Parish website. You will find LOADS more there. Then the Fete – as busy as ever with displays and stalls for every taste – including the dogs.

This month is rather quieter. The **Garden Society** have their Summer Show on the 3rd July in the Village Hall. Details and history of the Society on pages 14-16.

On 9th and 10th July '**Hollingbourne in Colour**' will be judged – see ad.

In line with the plans for a community hub at Hollingbourne Station, there is due to be a **Community Heritage Event** (in conjunction with Kent Community Rail Partnership) at the Station on Saturday, 6th August. I have no further details at present, so watch next month's magazine.

If you are involved in a group or society and are putting together your future plans, please let me know so that I can incorporate your dates in the Village Diary. And also send me your reports. Many thanks.

Carole Findlay

Hollingbourne.pariah.magazine.editor@hotmail.com

Reading Group July

This is the time of year when everyone thinks about what books to take on holiday, whether it is beach or countryside, city break or rural idyll. Many people read light fiction, which does not need much concentration, whereas others prefer something more challenging that there has not been time for during the year.

Popular fiction books include '**Again Rachel**' by **Marian Keyes**, '**Malibu Rising**' by **Taylor Jenkins Reid**, '**The Paris Apartment**' by **Lucy Foley**, or '**The Midnight Library**' by **Matt Haig**.

More complex reads are '**Life on our Planet**' by **David Attenborough** or '**Tornado**' by **John Nichol**.

It is hoped that The Book Group can finally meet in a garden this summer in order to discuss our summer reads. This will help us to plan the future.

Dawn Perry

880634

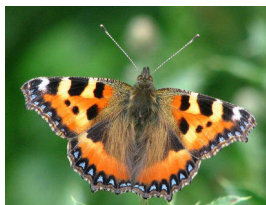
Country Notes for July 2022

What a pleasure it is to walk around our villages at the moment, with my spaniels, soaking in the glories of this time of year. As I write these notes in mid June, the vibrant green of so much new growth shows the countryside off at its very best. The meadows look amazing, especially in a light breeze, as their flower heads dance in waves. The woodlands look so dense, with their newly emerged fresh green leaves and there seem to be flowers everywhere. In the hedges the dog roses are proudly displaying their wonderful, lightly scented pink flowers and the meadow brown butterflies have just started emerging, to join the many varieties that have already shown their faces. There seem to be quite a few small tortoiseshells too, which is good news, as their fortunes have been rather varied in recent years.

There are birds busily scurrying around feeding their rapidly growing nestlings, and two bird families in particular have given me special pleasure this year. One of them is a family of kestrels nesting in a beautiful oak tree under which people frequently pass. As the adults return with yet more food, the young can be clearly heard shouting encouragement to Mum or Dad to choose their mouth in which to deposit the latest offering. The other nest is in my own garden where a pair of dainty dunnocks have chosen to build a nest in a mixed hedge that I only planted about three years ago. I love hearing the sound of those nestlings too, as the parents return time and time again to feed them. Dunnocks are tiny birds in comparison to the kestrels and they must be exhausted! I take their choice of my hedge, in a spot very close to my cottage door, to be an endorsement of my choice of planting!

They, and all the other birds working hard to fill their nestlings' empty stomachs, are a delight to witness as full blown summer takes hold of the countryside in our villages!

Andrew Snowden



Watch less TV, and live longer

A recent study at the University of Cambridge has estimated that about one in ten cases of heart disease could be prevented, if people watched less TV.

It seems that more than four hours of screen-based sedentary activity a day can lead to coronary heart disease, which is one of the UK's leading causes of death. Heart disease is responsible for about 64,000 deaths each year.

On the other hand, people who watch two to three hours a day were found to have a six per cent lower risk of developing heart disease, while those who view less than an hour a day had a 16 per cent reduced risk.

A couple with three young children went on holiday to America, and eventually ended up waiting in line at San Francisco's Pier 41, to purchase tickets for a boat trip to Alcatraz. Others watched with varying degrees of sympathy and irritation as the young children fidgeted, whined, and punched one another. The frazzled parents reprimanded them, to no avail. Finally they reached the ticket window. "Five tickets, please," the father said. "Two round trip, three one way."

A man and his ten-year-old son were on a fishing trip, miles from home. At the boy's insistence, they decided to attend the Sunday worship service at a small rural church. The father forgot to bring any cash, so he reached in his pocket and gave his son 10p to drop in the offering plate as it was passed. As they walked back to their car after the service, the father complained. "The service was too long," he lamented. "The sermon was boring, and the singing was off key."

Finally the boy said, "Daddy, I thought it was pretty good for 10p."

National 'Don't Step on a Bee Day' – 10th July

Bees need your help. And we need their help.

Not only do bees help provide the honey, propolis and beeswax, but they also help to keep us all fed and watered. Without bees, more than a third of everything we eat would disappear from our tables.

The majority of our honey here in the UK is imported (85%), but there are also many beekeepers on our doorstep. So why not visit a near-by farm shop or deli and enjoy the precious produce of local beekeepers for breakfast?

You can also help bees by planting wildflower seeds that will provide a food supply. Download the Great British Bee Count app created by Friends of the Earth which allows you to log the bees you spot out and about. This builds a picture of bee health and activity in the UK.

Finally, build a bee hotel! Bees need somewhere to rest when they venture out on their pollen mission. You can find a step-by-step guide here: <https://www.woodlandtrust.org.uk/blog/2020/04/how-to-build-a-bee-hotel/>



Hollingbourne in Colour Competition

9th July 2022

To continue the Queens Platinum Jubilee Celebrations, Hollingbourne Parish Council have launched the Hollingbourne in Colour Competition.

We invite our green fingered residents to enter your front garden (so other residents can enjoy them too) whether it be a hanging basket, container, or border.

Judging will take place the weekend of 9th and 10th July.

If you would like your display to be entered into the competition, please complete the form and email to the Parish Clerk at pchollingbourne@gmail.com or print and post to the Parish Clerk at Hollingbourne Parish Council at Cardwell Pavilion, Greenway Court Road, Hollingbourne, ME17 1QQ

First Prize kindly sponsored by Westland Horticulture Ltd - £50 Garden Voucher

There will also be a second and third prize



Advertising terms explained

NEW - Different colour from previous design.
ALL NEW - Parts are not interchangeable with previous design.
EXCLUSIVE - Imported product from goodness knows where.
UNMATCHED - Not quite as good as the competition.
FOOLPROOF OPERATION - No provision for adjustments.
ADVANCED DESIGN - The advertising agency doesn't understand it.
IT'S HERE AT LAST - Rush job. Nobody knew it was coming.
FIELD TESTED - Manufacturer lacks on-site test equipment.
HIGH ACCURACY - Unit on which all parts actually fit.
FUTURISTIC - We have no idea why it looks the way it does.
REDESIGNED - Previous flaws fixed - we hope.
DIRECT SALES ONLY - Factory had a big argument with distributor.
YEARS OF DEVELOPMENT - We finally got one to work.
BREAKTHROUGH - We finally figured out a use for it.
MAINTENANCE FREE - Impossible to fix.
MEETS ALL STANDARDS - Ours, not yours.
SOLID-STATE - Don't drop it on your foot.
HIGH RELIABILITY - We made it work long enough to ship it.

Minutes of the Meetings of Hollingbourne Parish Council can be viewed on the website pchollingbournepc.co.uk.

HOLLINGBOURNE PARISH COUNCIL MEETINGS

The Next Meetings are to be held on

At 7.30 pm

Monday, 11th July

No Meeting in August

Monday, 12th September

At The Cardwell Pavilion

Residents and representatives of the media interested in joining the meeting should contact the Clerk via pchollingbourne@gmail.com.

The Parish Council's aim is to include them within the meeting.*

There will be a 10 minute interval before the meeting to allow members of the public to speak

The Hollingbourne Big Jubilee Lunch

Thank you so much to all the Hollingbourne residents who attended the Platinum Jubilee Lunch and Street Party.

The weather held out with none of the torrential rain or winds of the last few days and the music provided by Al Scott was greatly enjoyed by everyone.

The community spirit was abundant as all helped to set up and remove the bunting and tables and chairs and the closed road was greatly appreciated as traffic, for once was stopped for the occasion.

Thank you to everyone who helped set up and pack up.



(I have not yet mastered the technique for downloading photos from the parish website, so only this one has made it. For mor, go to the Hollingbourne Parish Council website.)

Lighting of the Beacon at Millenium Green on Thursday, 2nd June

A large crowd gathered at Millenium Green to watch the lighting of the Jubilee Beacon at 9.45 pm. The beacon was reluctant to catch light, but eventually lit to spectacular effect against the darkening sky.



HOLLINGBOURNE WI NEWS JUNE

Our May meeting was the AGM-in which 9 members were appointed to the committee. An advisor from the West Kent Federation attended in an advisory capacity. We all nominated a President and as a result, both Mary Henderson and Barbara Gibbs were elected. They will be a strong team to take us forward. Sue Roberts will take a well-earned rest and we thank her for keeping it all together during the most tricky of times.

Frank Bradshaw, the First Responder from Lenham, joined us after the election to demonstrate the dos and don'ts of using a defibrillator. He had us in stitches! We learned to find the exact position of our hearts, how to take our own pulse and then our neighbour's pulse. We learned D R A B C: Danger, Response, Airway, Breath and Call for help! Frank constantly tested us throughout the talk. 'A wonderfully informative and absolutely hilarious evening' said Penny Smith.

Hollingbourne WI is a member of the North Downs Group of Wis (all 12 of them). This means we often invite each other to various events. Hucking WI organised a Peony Picnic on 9th June. Jenny Cox organised our group to attend and wrote the following report; 'due to the peony season being earlier this year coupled with the difficulties of torrential downpours, Hucking WI brought forward their Peony Picnic by 10 days which was attended by other groups in the District. 12 members of our WI set forth complete with chairs and rugs to enjoy the field of peonies growing at Little Budds Farm, Thurnham. Unfortunately the weather did not oblige, so after a swift look at the magnificent variety of peonies we settled down in the Upper Barn – used by 'This Art of Mine' for a splendid buffet provided by Hucking WI. It was a thoroughly enjoyable evening- talking and laughing with friends all sharing a common interest'.

We are preparing for the Village Fete – our old fashioned- Hook A Duck stall – and the week after that the new committee meet to kick start what we hope will be a Covid Free future.

Our meeting on Tuesday, July 19th, will feature Guy Bartlett, the well-known aviation historian, who will tell us all about 'the Red Arrows' – still in our minds after the Jubilee Celebrations!

£3 on the door of the Windmill Hall at 8pm – we look forward to welcoming you there.

Val Williams

Secretary Hollingbourne WI

You may get to the very top of the ladder, and then find it has not been leaning against the right wall. - A Raine

Nothing handicaps you so much in golf as honesty. - Anon



Music Notes June 2022



I have failed to find any local orchestral concerts confirmed for July, although **Maidstone Wind Symphony** have indicated an intention to do something on **July 9th**, a date that clashes with at least two other local events. Perhaps people will not mind, as the BBC proms start this month. The first night is **15th July** and that concert (**Verdi's Requiem**) will be shown on **BBC2** at **7.15pm**.

Meanwhile, our local singers, who were busy just practicing last month, all seem to be performing in July, as listed:

Saturday, 2nd July at 7.30pm at **All Saints Church**, Mill St., Maidstone ME15 6YE, **Maidstone Choral Union** present a Concert for Nations, which includes **Mozart's` Requiem** with **MCU Sinfonia** and invited soloists. Visit <https://maidstonechoralunion.co.uk> or 07752 923084 for information and tickets.

Saturday 9th July at 7 pm at **All Saints Church**, Biddenden, TN27 8AH, **Sutton Valence Choral Society** offer a concert of Summer fun, comprising music by **Rutter, Sullivan, Schubert, Lloyd-Webber, Sondheim** & more. Contact 01622 8910589.

Also on 9th July at 7.30pm at the church of **St. James the Great**, East Malling, **East Malling Singers** present their Summer concert, which includes **Rutter's Gloria** and **Copeland's Fanfare for the Common Man**. Tickets 01622 750943.

And again on 9th: Maidstone Wind Symphony propose a concert entitled "**Thunk!**" but at the time of going to press details are yet to be confirmed. See <https://www.maidstonewindsymphony.org/index.html>.

Saturday, 16th July at 7.30pm at **St. John's School**, Provender Way, Grove Green, MRE'14 5TZ, **Bearsted Choral Society's** Summer Concert is entitled "**Sacred & Profane**" and includes traditional tales and texts given a contemporary twist. Tickets 0333 663366.

This month's anniversary is **3rd July**, the **170th anniversary** of the birth of **Leoš Janáček** (3 July 1854 – 12 August 1928). He was a **Czech** composer, musical theorist, folklorist, publicist and teacher, inspired by Moravian and other Slavic music, including Eastern European folk music, to create an original, modern musical style.

Until 1895 he devoted himself mainly to folkloristic research. While his early musical output was influenced by contemporaries such as Antonín Dvořák, his later works incorporate his earlier studies of national folk music in a modern, highly original synthesis, first evident in the opera **Jenůfa**, which was premiered in **1904**. The success of *Jenůfa* (often called the "Moravian national opera") at Prague in 1916 gave Janáček access to the world's great opera stages. His later works are his most celebrated. They include operas such as **Káťa Kabanová** and **The Cunning Little Vixen**, the **Sinfonietta**, the **Glagolitic Mass**, the rhapsody **Taras Bulba**, two string quartets, and other chamber works. Along with Dvořák and Bedřich Smetana, he is considered one of the most important Czech composers.

Cw roofing specialist

Cw roofing are experienced roofing specialists we are fully qualified and fully insured to repair and replace all types of roofing. to book a free survey – or for free help and advice call Chris on 07943575082

chriscollier108@yahoo.com

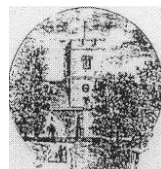
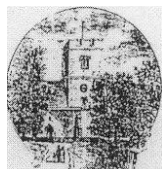


Cw roofing specialist
-roof replacement
-roof repairs
-fiberglass and felt
flat roofs
-chimney repointing
and repairs
-fascia soffit and
guttering
-lead work
-All roof cement work

please do not hesitate to call for
a friendly free quote or advice
07943575082



PILGRIMS WAY
CHURCHES
Growing together



All Saint Church was delighted with the support for their Tombola stall at the Village Fete on 11th June.

Your enthusiasm raised a much appreciated £575.50 (50p for the one magazine sold!).

We look forward to seeing you all again next year.

LEEDS CASTLE AND HOLLINGBOURNE GARDEN SOCIETY



1872 – 2022

Victoria



Elizabeth II

IT IS

150 YEARS SINCE THE FIRST

HOLLINGBOURNE SUMMER FLOWER SHOW

PLEASE COME AND JOIN US ON

SUNDAY 3RD JULY 2022

TO CELEBRATE WITH

*****A FLOWER SHOW & CREAM TEAS*****

Hollingbourne Village Hall

2.00 – 4.00 pm

Flowers : Fruit : Vegetables : Floral Art & Baking

HAVE A CHAT : ENJOY A DELICIOUS CREAM TEA

STALLS AND RAFFLE

Exhibits welcome from members & non-members

Full details & Schedule on website lchgardensociety.co.uk

or contact Pat Bristow on 01622 880457

LEEDS CASTLE & HOLLINGBOURNE GARDEN SOCIETY

1872 – 2022

The first reports found of the Society were headed "Cottage Gardeners Show". The name was soon changed to "The Hollingbourne and District Gardeners', Amateurs and Cottagers' Mutual Improvement Society," reflecting Victorian enthusiasm for edification.

The Maidstone and Kentish Journal reports of the first show on Wednesday, 31st July, 1872, held in the grounds of Elsfield House, at the time owned by Mr Lawrence, now the grounds of the Great Danes Hotel. There were tents for the flowers and refreshments, flags, balloons and fireworks along with the Birling Brass Band playing, cricket matches and other sports took place.

The show was limited to the cottagers, but several gentlemen (including P. Wykeham Esq., of Leeds Castle, W. Lawrence Esq. a proprietor of a large Maidstone grocery business, R.Thomas Esq., of Eyhorne House and C. Sedgwick Esq., surgeon of Eyhorne Street) kindly sent plants for a central display. The competition was keen and Mr Lawrence, when distributing the prizes, promised four prizes for window box plants for the following year, two for Hollingbourne and two for Leeds.

The show of 1872 set a pattern, with the addition of amateurs' and gardeners' classes, that was to continue until the death of William Laurence in 1899. The Hollingbourne Flower Show was a major annual event, with half holidays for the schoolchildren.

After that success, Mr Philip Wykeham Martin, of Leeds Castle, founded the Leeds and Broomfield Allotment Society and they held their annual shows a week before Hollingbourne, in the park adjoining Leeds Castle.

As well as the large annual shows, smaller Autumn shows were held in the Leeds School House Room. While monthly meetings (apart from September on account of the hop-picking) were held in rotation at the George Inn, the Olde England Inn and the Sugar Loaves, - the AGM being held at The Windmill. In later years the Ten Bells at Leeds was added to the circuit. There was usually an annual dinner held in one of the inns.

In 1896, on the death of George Lampard, the tasks of being Secretary and Treasurer of both societies fell to Herbert Bridge, master of Leeds School. After Mr Lawrence's death, and the cancellation of the summer show in 1899, a joint meeting was held at the George Inn. Finally, in 1901, it was agreed to amalgamate, originally to be called 'The Leeds Castle and Hollingbourne Garden and Allotment Society, with Mr C. P. Wykeham Martin as President. Later that year they changed to its present name 'The Leeds Castle and Hollingbourne Garden Society'

Leeds Castle Park became the home of the summer shows, yet the numbering of those shows was counted from the first show at Elsfield House in 1872.

.../...

The Show of 1901 coincided with the Wykeham Martin's Silver Wedding celebrations and the castle itself was opened to the public, while the show of 1902 recorded an attendance of about 2,000, including the school children members and participants. They all making a huge profit of £50, so that the Society donated 5 guineas to Maidstone Hospital.

Although the annual shows declined in popular appeal in Edwardian times, there was no loss of interest in gardening. The summer show of 1914 was the last of the old style in Leeds Castle Park.

The large summer show was revived in 1920, but not in Leeds Castle Park. With the approval of the Wykeham Martins the new venue was Elsfield Meadow near Hollingbourne Corner.

The Women's Institute, which began in Britain in 1915, became involved with the shows and, from 1922, were responsible for the domestic arts. The growing enthusiasm for poultry keeping formed a further new section in the annual shows.

The Kent Messenger reported on the Jubilee Show of 5th August, 1922, with special mention to the number of pens of high class poultry and double the number of entries from the previous year.

The Society continued until the outbreak of World War II. After that, the Society's activities were broken off until October, 1946, when the Society came alive again, with the summer shows to be held in the meadow near Hollingbourne Corner.

Olive, Lady Baillie, the owner of Leeds Castle from 1926 until her death in 1974 when the Castle was placed in a trust, donated a silver cup for the best floral exhibit in the Summer Show.

These notes have been made from "Seed Beds the first fifty years 1872 – 1922" researched and written by Elwyn Evans in 1983.

The next stage of the history of the Society from 1950 is within living memory of some and has yet to be recorded. It is hoped the celebration of 150 years since the first Hollingbourne Show in the grounds of Elsfield House will bring together more of the more recent history.

Do you have any memories to add?

Please send any information to: Pat Ross
jross196@btinternet.com

Queen Victoria admiring the Leeds Castle and Hollingbourne Garden Society display at the Village Fete on 11th June.



Open Air Theatre at Hollingbourne Cricket Ground



Join Scoot Theatre at the Hollingbourne Cricket Ground for an outdoor, 60 minute, family-friendly production of A Midsummer Night's Dream!

We can safely say that Scoot will surprise you...we're completely converted by their accessible adaptations which are unpretentious, silly fun.
THE FAMILY STAGE

When: 21st July 2022

Performances: 2pm and 6pm

Where: Bearsted CC – The Hollingbourne Ground, Pilgrims Way, ME17 1UW

"The couse of true love never did run smooth..."

Hermia loves Lysander. Lysander loves Hermia. But Demetrius loves Hermia. And Helena loves Demetrius.

They all run away into the woods where the mischievous fairy Puck has plenty of tricks in store for them! Meanwhile, the local cricket team is getting together to rehearse a play...

Join Scoot for their outdoor, sixty-minute, family-friendly production of A Midsummer Night's Dream.

Touring cricket clubs in the Southeast, six actor-musicians present one of Shakespeare's favourite comedies, with a Scoot 'spin'. Get ready for confusion, chaos and costume changes!

Expect music, magic, and cricket bat sword fights!

Whether you're 5 or 105, a Shakespeare newcomer or a Bard aficionado – Scoot has something for everyone. So, bring a picnic blanket, enjoy the hospitality of your local cricket club and let Scoot entertain you!

Book tickets through **Bearstead Cricket Club**

Whoever said "Out of sight, out of mind" never had a large spider disappear in the bedroom.

Grandchildren are God's reward for not strangling your own children.

Some people won't suffer in silence because that would take all the pleasure out of it.

Night time Road Closures – A20, Ashford Road, Hollingbourne – 26th June – 8th July 2022

It will be necessary to close part of A20 Ashford Road, Hollingbourne from 26th June 2022, between the hours of 21:00 and 05:00, with estimated completion by 8th July 2022.

A20 Ashford Road will be closed from the junction with Old Mill Lane to outside Oakfield House, to the extent indicated by signs and barriers on site.

The works will be carried out in phases, with only one direction of traffic being affected at a time.

Phase 1

A20 Ashford Road will be closed (Westbound only) from the junction with Old Mill Lane to outside Oakfield House, to the extent indicated by signs and barriers on site.

The alternative route for any through traffic (excluding over height) is via A20 Ashford Road, A20 Maidstone Road, A252 Charing Hill, A252 Canterbury Road, A251 Faversham Road, A251 Ashford Road, A2 London Road, A249 Maidstone Road, A249 Sittingbourne Road, A249 Detling Hill, A249 Bearsted Road, A249 Sittingbourne Road, A249 Andrew Broughton Way and A20 Ashford Road.

The alternative route for over height vehicles is via A20 Ashford Road, A20 Maidstone Road, A252 Charing Hill, A252 Canterbury Road, A251 Faversham Road, A251 Ashford Road, A2 London Road, A249 Maidstone Road, A249 Sittingbourne Road, A249 Detling Hill, Bearsted Road, New Cut Road and A20 Ashford Road.

Additional Traffic management will be in place during the westbound closure on A20 Ashford Road, as detailed below.

B2163 Penfold Hill will be closed near the junction with A20 Ashford Road, to the extent indicated by signs and barriers on site.

The alternative route is via B2163 Penfold Hill, B2163 Lower Street, B2163 Upper Street, B2163 Leeds Road, A274 Sutton Road, Willington Street and A20 Ashford Road.

Old Mill Road will be closed at the junction with A20 Ashford Road, to the extent indicated by signs and barriers on site.

The alternative route is via Forge Lane, Caring Lane and A20 Ashford Road.

A no right turn restriction will be temporary imposed on Eythorne Street. Restricting vehicles existing Eythorne Street from turning right onto the A20 Ashford Road.

The alternative route for this restriction will be via the official diversion route.

Vehicles wishing to join the A20 from M20 J8 will be diverted London bound on the M20 to J7.

Phase 2

A20 Ashford Road will be closed (Eastbound only) from the junction with M20 J8 roundabout to outside Oakfield House, to the extent indicated by signs and barriers on site.

The alternative route for any through traffic (excluding over height vehicles) is via A20 Ashford Road, A249 Andrew Broughton Way, A249 Sittingbourne Road, A249 Bearsted Road, A249 Detling Hill, A249 Sittingbourne Road, A249 Maidstone Road, A2 London Road, A251 Ashford Road, A251 Faversham Road, A252 Canterbury Road, A252 Charing Hill, A20 Maidstone Road and A20 Ashford Road.

The alternative route for over height vehicles is via A20 Ashford Road, New Cut Road, Bearsted Road, A249 Detling Hill, A249 Sittingbourne Road, A249 Maidstone Road, A2 London Road, A251 Ashford Road, A251 Faversham Road, A252 Canterbury Road, A252 Charing Hill, A20 Maidstone Road and A20 Ashford Road.

Additional Traffic management will be in place during the eastbound closure on A20 Ashford Road, as detailed below.

Eyhorne Street to be closed at the junction with A20 Ashford Road, to the extent indicated by signs and barriers on site.

The alternative route for traffic travelling west on A20 Ashford Road is via Eyhorne Street, Hollingbourne Hill, Swanton Street, Bredgar Road, Tunstall Road, Woodstock Road, Bell Road, Crown Quay Lane, A2 London Road, A249 Maidstone Road, A249 Sittingbourne Road, A249 Detling Hill, A249 Bearsted Road, A249 Sittingbourne Road, A249 Andrew Broughton Way and A20 Ashford Road.

The alternative route for traffic travelling east on A20 Ashford Road is via Eyhorne Street, Hollingbourne Hill, Swanton Street, Bredgar Road, Tunstall Road, Woodstock Road, Bell Road, Crown Quay Lane and then join official diversion route.

The no right turn restriction on B2163 Penfold Hill will be temporarily suspended to allow vehicles to join onto A20 Ashford Road.

The restrictions are required for the safety of the public and workforce while resurfacing works are undertaken by Kent County Council.

For the most up to date information on these works please visit: <https://one.network/?tm=128838828>

For information regarding this closure please contact Kent County Council on 03000 418181, who will be able to assist with the scope of these works.

This bulletin contains public information and can be forwarded to any other road users who may be affected. Every care is taken to ensure the accuracy of the information, but no liability can be accepted for any changes or errors. Road names are taken from the National Street Gazetteer, which can be

viewed on [one.network](#), with alternative names given where known.
For details of roadworks, please see [one.network](#)



Ashford Road Hollingbourne 26 6 22 closure



Not everyone has a natural gift for
rural ministry

Somebody finally invented
a solar-powered laundry
dryer. It's called a 'clothes-
line'.

EDIFY
Counselling & Training

Jay Ford

MACC Accredited - Dip Couns
Cert Dip Supv

07788 972623
edify.ct@btinternet.com
www.edifyct.com

Play therapy available for under
16 year olds with consent.
Corporate Training.

Little Pyne Trees
For All your gardening needs
Regular weekly / fortnightly
One off jobs
Friendly Lady Gardeners
07816.539696
pynetrees@googlemail.com



Unit 1B, Little Caring Farm, Caring Lane, Maidstone ME17 1TH
01622 880751 | www.prismalarms.co.uk | info@prismalarms.co.uk



**GILL
TURNER
TUCKER**

*Specialists Solicitors for you and for businesses,
a name you can trust. Founded in Maidstone in 1949.*

- Family
- Wills, Trusts & Probate
- Powers of Attorney
- Employment
- Residential Property
- Commercial Property
- Company & Commercial
- Claims & Disputes

2 County Gate, Staceys Street, Maidstone, ME14 1ST

T: 01622 759051 E: info@gillturnertucker.com www.gillturnertucker.com



FLOORING
(SOUTH EAST) LTD

**CHOOSING CARPETS
MADE EASY**

**CARPETS, VINYL & NATURAL FLOORING
ALL LEADING BRANDS SUPPLIED & INSTALLED**

QUALITY, RELIABILITY & VALUE AS STANDARD

A FAMILY RUN BUSINESS FOR OVER 25 YEARS

SAMPLES BROUGHT TO YOUR HOME

01622 880596
mpflooringltd@btconnect.com

Proud members of
Checkatrade.com
Where reputation matters
FULLY INSURED

HELEN WHATLEY'S NEWSLETTER

Supporting families with the cost of living, and looking to the future

Now we have turned the tide on Covid, we can look forward to something like a normal summer for the first time in three years.

It's been great being able to get out and meet people in person again – from visiting Harrietsham Primary School with the Bishop of Dover to meeting staff and prisoners at East Sutton Park Prison. I missed these visits during the pandemic, and I'm so pleased that they're possible again.

But while our recovery from Covid is well underway – and there are now more people in work than ever – soaring gas prices and global inflation are putting a squeeze on household budgets.

That's why last week the Chancellor announced a further £15 billion to support households with the cost of living. That's on top of the £22 billion already announced, bringing the total up to £37 billion this year.

This includes a £400 grant for all households to help with their energy bills, a £650 cost of living payment for 8 million of the most vulnerable households, and more money for the Household Support Fund, with Kent County Council getting an extra £11 million to support families hardest hit.

Longer term, it's clear we need to redouble our efforts to produce cheaper, greener, and more secure energy here at home. Our British Energy Security Strategy sets out how we will get there.

Putin's war in Ukraine is continuing to be felt around the world. While the invasion has pushed up bills in this country, for people in Ukraine it has meant homes destroyed and loved ones killed.

Earlier this month I welcomed two constituents from Faversham to Parliament with the Ukrainian family they've invited into their home. It was a privilege to have helped secure the visas to make their journey to the UK possible.

The response to our Homes for Ukraine Scheme has been tremendous, and a testament to the generosity of people in this country – even at difficult times.

Boost for levelling-up in Kent!

People in Faversham and Mid Kent will be benefitting from our new UK Shared Prosperity Fund. Our local authorities have been allocated funding to spread opportunity and make life better for people in places most in need of support. Over £2.6 billion will be allocated to local communities in every part of the United Kingdom, with Maidstone and Swale Borough Council each receiving around £1.2 million.

The funding will help unleash the creativity and talent of communities that have for too long been overlooked and undervalued. I'm determined to see our levelling up plans benefit Kent.

Solutions needed for Brock disruption

Recent disruption at the Channel Ports has led to the return of Operation Brock on the M20 and huge pressure across the road network in Kent.

The past few weeks have clearly shown that we need a long-term solution to Operation Brock. Turning the M20 into a lorry park every time there is disruption at the Channel Ports is simply not sustainable.

I've called meetings with Ministers, police, and highways agencies about the disruption – and I'll be taking part in the upcoming review of Operation Brock led by the Kent Resilience Forum.

Key bus routes need to be saved

I've responded to Kent County Council's bus consultation calling for any reduction in bus services to be kept to an absolute minimum – paying particular attention to people and places that most rely on subsidised routes.

Bus services are a lifeline for lots of people, and I've also stressed that no communities should be left without a bus service as a result of any changes.

Last month I met with representatives from Arriva buses to raise existing problems with local services – including delays to buses used by school children.

Young farmers are the future

On Easter Saturday I called into Cobtree Young Farmers Club. Farming is a big part of our local economy and at the heart of rural communities across Faversham and Mid Kent.

Young Farmers Clubs do a fantastic job in getting young people interested in farming – they're not only a lot of fun but also provide a springboard to a career in farming and the agricultural sector.

I'm standing up for the sector in parliament by helping local hop growers to get the support they need as we recover from Covid. I'm also doing everything I can to make sure farmers have access to the seasonal workers they need at harvest time.

Extra funding to keep Kent safe

It's great that the Kent and Medway Violence Reduction Unit (VRU) is getting over £5 million in extra funding.

The money will be used to tackle crime and anti-social behaviour in known trouble spots across the county – making our communities safer and preventing people from falling into crime in the first place.

In partnership with Kent Police, Medway Council and Kent County Council, the VRU has so far funded 35 projects that support local communities and change the lives of young people.

Calling in to Heart of Kent Hospice

I visited the wonderful team at Heart of Kent Hospice in May to see how they're getting on and discuss how I can support them.

I also joined the Motor Neurone Disease Branch meeting at the Hospice. When I met them over Zoom last year, they asked me to lobby for investment in a cure for MND, and to change the reassessment process for terminally ill people applying for Personal Independence Payments.

Following that, the Government is doubling funding for research into dementia and neurodegenerative diseases and changing the PIP rules for people likely to live 6 months or less.

A couple took their five-year-old young daughter to church. During the service, the minister conducted the baptism of a tiny infant. The little girl watched in wonder as he held the baby, said solemn words, then poured water over its head, and then carefully wiped it dry. Finally, she turned to her father. "Daddy, why is he brainwashing that baby?"

When using a public campground, a tuba placed outside your tent will keep the spaces on either side vacant.



Fire Wood

Logs

Kindling

Seasoned firewood
suitable for all fires from
local coppiced woods.

Please call Norman
07733.328715



HOLLINGBOURNE PROPERTY SERVICES LIMITED

Building and Property
Maintenance Specialists

Electrical * Plumbing
*Decoration *

Heating and Boiler servicing

01622 880000

Email : hollingbourne@hotmail.co.uk

www.hpsltd.co.uk





Architectural & Interior Design

Residential	Commercial
Extensions	Alterations
New Builds	Bldg Regs
LA Planning & Listed Buildings	

Tel: 01622 880006 / 07785 544255

PORTICO ARCHITECTURE & INTERIORS

**6 Tilefields, Hollingbourne,
ME17 1TZ**

E-mail: info@portico-uk.com



Domestic Cleaning

We Clean So You Don't Have To!



Competitive Pricing, Fully Insured, Reliable, Professional, Trustworthy
Available to do:
Household Cleans, End of Tenancy Cleans, Holiday Lets
Call us today!

01622 880031



Pest Purge Ltd
**For all your
pest problems**



Rats, Mice, Squirrels, Bedbugs, Fleas
Wasps, Rabbits, Fox and Birds
No job too small, same day support
Talk to your local, friendly Pest
Control Business



call **01622 842481**
or **07758 615101**



The
Family
Funeral Service



**Compassionate and caring service
for the bereaved, day or night**

Karan Le Queleneec

4 Cavendish Way, Bearsted, Maidstone, Kent ME15 8PW

Tel: 01622 920305 bearsted@familyfuneralservice.net

**Rik Moore 6 Marlborough Parade, Beverley Road, Barming,
Maidstone, Kent ME16 9JN**

Tel: 01622 920300 barming@familyfuneralservice.net

www.familyfuneralservice.net



LEEDS CASTLE

Summer is and the gardens are in full bloom, with stunning irises, roses and foxgloves in full bloom in the Culpeper Garden. The Euphorbia are out en masse in the Lady Baillie Mediterranean Garden, and it is a heavenly place to bask in front of the Great Water on these sunny June days.

May Half Term was positive, with plenty of visitors and a lovely celebration of the Platinum Jubilee. I hope that you had a lovely time. We enjoyed attending the Broomfield Jubilee Fête, with my son receiving a special mention for his strawberry tart entry into the baking competition.

Given the Queen's Jubilee, we focussed on our six Mediaeval Queens' owners, telling their individual stories using an acting troupe, playing multiple roles. It went down very well and provided a great introduction for the upcoming '*Queens with Means*' experience, launching on 29th July.

This innovative approach will be located in the Gatehouse and will provide a 6-minute projected experience of the Mediaeval Queens coming to life and telling their individual stories, with the key events of their lives playing out in the background.

Queen Katherine of Aragon, King Henry VIII's first wife, acts as narrator and explains her role as Queen over 24 years, above and beyond the well-known story of her being replaced as Queen by Anne Boleyn, when she could not produce a living son as heir to the throne.

In the Castle, the first stage of the project to 'Bring the Castle to Life' as a 1930's country house party has been received well by visitors, with an excellent recent piece on BBC News about the changes. Further changes are underway and we plan to open up further rooms in Lady Baillie's personal bedroom suite, as well as some servants' rooms, in Spring, 2023.

At the Birds of Prey Centre, we have been pleased to welcome Baby Norris, the Tawny Owl, who has become very popular on social media, posing on the weighing scales and cuddling up with his teddy. Norris is now rapidly growing into his adult plumage and, having learned to fly, is now housed in his own aviary, next to Logan, the Barn Owl.

We are also fundraising to purchase six black swan cygnets so we can restore these beautiful, iconic creatures to Leeds Castle. Due to the risk of avian flu spreading from wild birds over the winter, government introduced a legal requirement to pen our captive birds during the outbreak.

Sadly, despite our Falconry Team caring for the birds assiduously, all of the black swans perished due to lack of exercise before we were allowed by DEFRA to release them. This has been absolutely heartbreaking for the team and also for the many visitors who loved to see these beautiful birds sailing gracefully across the water.

We hope to raise enough funds to purchase these cygnets and get black swans back to the Castle by autumn.

Coming up during July is the annual Leeds Castle Concert on 9th July, which I am sure many of you will attend. Last year's concert was a really joyful moment, as so many sought to get back to more normal lives after the extended lockdowns of the COVID pandemic. We hope this year's will be equally enjoyable and inspiring.

Hoping you have a lovely summer.

Helen Bonser-Wilton

Chief Executive

Take this simple test to see if you qualify for solo camping: shine a torch into one ear. If the beam shines out the other ear, do not go into the woods alone.

A potato baked in the coals for one hour makes an excellent side dish. A potato baked in the coals for three hours makes an excellent hockey puck.

The sight of a bald eagle has thrilled campers for generations. The sight of a

A two-man pup tent does not include two men or a pup.



Sheds and Shelters Ltd

Hollingbourne Maidstone Kent

Manufacturer of all types of
garden buildings

All buildings made to order

Prices inc VAT, Delivery &
Erection

We only use tanlised timber

Tel. 01622 880031
www.shedsandshelters.co.uk



PATRIK GARTEN'S NEWSLETTER

Most likely you will have read about the recent election results. Overall, the Conservative Group at Maidstone have bucked the national trend, although there is no denying that we lost two members. Fortunately, Cllr de Wiggondene-Sheppard of Detling and Thurnham ward returned back to our group. This leaves us a majority of one and allows us to proceed with the essential works, which we started last year. As previously reported, the new council will operate under a hybrid model of an Executive Cabinet and three Policy Advisory Committees. This unique Maidstone model will return to a strong and effective executive leadership while not entirely discarding the few benefits which the old committee system offered. Members and officers are looking forward to a culture change for the better in Maidstone House.

THE GREEN PARTY

North Downs' voters may remember the Green Party candidate who gave me a run for my money in last year's election. This year Mr Jeffery's tireless campaign bore fruit and he became the Green Party's councillor for the urban Bridge Ward. I hear that upon election he joined the Independent Councillors Group. A tactical move no doubt, to get more committee seats than he would otherwise be entitled to as the sole Green Party member. He immediately rumbled the council chamber by criticising the Independent Remuneration Panel.

THE INDEPENDENT REMUNERATION PANEL

The role of the elected Councillor should, in part, be viewed as unpaid voluntary service. The Independent Remuneration Panel therefore advocates a principle of fair remuneration:

Remuneration should not be an incentive for service as a councillor. Nor should lack of remuneration be a barrier. The basic allowance should encourage people from a wide range of backgrounds and with a wide range of skills to serve as local councillors. Those who participate in and contribute to the democratic process should not suffer unreasonable financial disadvantage as a result of doing so.

The Panel therefore found that **£9.03** per hour is a fair rate. This is 47 pence below the National Minimum Wage and limited to 12 hours per week only. Many of us work much longer hours and most of us are not entitled to any special allowance for additional work.

Cllr Jeffrey is right insofar as there will be a steep spending increase for members' remuneration due to our governance system changing. For elected members to take back control of the council we will overall need to spend more time doing our job. The previous committee system failed the people of Maidstone.

Democracy does not come for free but the taxpayers of Maidstone will get a good deal. – I'm not too sure that the NHS did, when they paid Mr Jeffrey £140,000 (including pension contributions) in 2019.

JUBILEE AND OTHER EVENTS

There are just too many events to list for the Jubilee Weekend. Please refer to your Parish Council's website. However, for Kent-wide listings you could also look here <https://letstalk.kent.gov.uk/platinumjubilee> and for Maidstone events: <https://www.visitmaidstone.com/whats-on>. The latter website is also a good event guide throughout the year. You may want to add it to your Favourites / Bookmarks.

ALLINGTON HWRC

I have been advised that the new KCC Waste Management site in Allington is now open to the public. To ensure maximum efficiency, the new site has been designed to operate without interruption as it is built on two levels thus allowing full containers to be removed safely while residents can still use the site to deposit their recyclables and waste. A number of other environment-friendly features were incorporated into the design, such as solar panels and rainwater harvesting.

The site will offer Maidstone residents an alternative, to the site in Toil.

MAIDSTONE BUSINESS BOOST NETWORKING EVENT

Organised by The Business Terrace, MBC's flexible workspace, a free to attend in-person networking event invites Maidstone businesses of all ages and sizes to come and find out what 'boosts' could be available to them through the range of free resources on offer. The MBB Networker event takes place on Tuesday 7 June, 12-2pm. <https://www.eventbrite.co.uk/e/mbb-networker-registration-327256471917>

AND FINALLY.....

National bus company Stagecoach, which I hasten to add does NOT operate in Maidstone, has urged the Government to introduce devices to cars which keep track of where and how far they travel and apply a set toll charge. Just because their business model does not work they want us rural folk to subsidise it. Well, I urge the government to ignore Stagecoach's request until bus companies can provide a reliable and cost-effective service in the North Downs! If they cannot, then there is no point in flogging a dead horse at the expense of rural motorists.

PATRIK GARTEN

MBC Councillor for North Downs Ward (Conservative)
Phone: [01622-807907](tel:01622-807907)



All in the month of JULY

1400 It was:

years ago, on **16th July, 622**, that the **Islamic calendar began**. **Muhammad** and his followers migrated from Mecca to Medina to escape religious persecution (an event known as the Hegira) and established the first Muslim community. The year in which the Hijrah took place is also identified as the epoch of the Lunar Hijri and Solar Hijri calendars; its date equates to 16th July, 622, in the Julian calendar.

200 years ago, on **20th July, 1822**, that **Gregor Mendel** was born. This Austrian/Czech friar, and botanist discovered the laws of heredity and created the science of genetics.

150 years ago, on **1st July, 1872**, that **Louis Bleriot**, French inventor, and aviation pioneer was born. He developed the first practical headlamp for cars and became the first person to fly across the English Channel.

125 years ago, on **21st July, 1897**, that the **Tate Britain** art museum opened in London.

90 years ago, on **8th July, 1932**, that the **USA's stock market** (Dow Jones Industrial Average) fell to its **lowest point** (41.22) during the Great Depression.

Also **90 years ago**, on **19th July, 1932**, that **Lambeth Bridge** in London was officially opened.

80 years ago, on **4th July, 1942**, that the **Siege of Sevastopol** ended. Axis forces captured the Crimean port city, which they had first attacked in October 1941.

Also **80 years ago**, on **22nd July, 1942**, the Nazis began the mass transportation of Jews from the **Warsaw Ghetto** in Poland to the **Treblinka** extermination camp.

Also **80 years ago** on **31st July, 1942**, that the British charity **Oxfam** was founded. (Oxford Committee for Famine Relief)

75 years ago, on **9th July, 1947**, that Buckingham Palace announced the **engagement of Princess Elizabeth** (later Queen Elizabeth II) to **Lieutenant Philip Mountbatten**.

65 years ago, on **6th July, 1957**, that **John Lennon** and **Paul McCartney** met for the first time at a church hall in Liverpool, where 16-year-old Lennon was performing with his skiffle group the Quarrymen. 15-year-old McCartney joined as a rhythm guitarist shortly afterwards, and the pair went on to form the **Beatles**.

60 years ago, on **10th July, 1962**, that Swedish engineer **Nils Bohlin** was granted a US patent for the **three-point safety belt** for vehicles. It is now used in practically all road vehicles.

50 years ago, on **21st July, 1972**, that **Bloody Friday** took place when the IRA exploded 22 bombs in Belfast, killing nine people and injuring 130.

40 years ago, on **9th July, 1982**, that **Michael Fagan** broke into Buckingham Palace and spent 10 minutes talking to the Queen in her bedroom.

30 years ago, on **31st July, 1992**, that **Leonard Cheshire**, British RAF pilot, humanitarian and philanthropist, died. Founder of Leonard Cheshire Disability.

25 years ago, on **1st July, 1997**, that the **UK returned Hong Kong to China** after more than 150 years.

15 years ago, on **1st July, 2007**, that **smoking was banned** in all enclosed workspaces in England. Similar bans had already been introduced in Scotland (May 2006) and Wales (April 2007) and Northern Ireland (April 2007).

10 years ago, on **4th July, 2012**, that researchers at **CERN** in Switzerland announced the discovery of particles consistent with the **Higgs boson**. The discovery was confirmed in March 2013 and the researchers were awarded the 2013 Nobel Prize for Physics.

Also **10 years ago**, from **27th July to 12th August, 2012**, that the **Summer Olympics** were held in **London**.



**Enaid
DESIGN**

**CURTAINS, BLINDS
& INTERIOR DESIGN**

Designer Fabrics • Little Greene Paint
Made-to-measure Curtains & Blinds
Re-makes & Alterations • Installation Service
Tracks & Poles • Re-upholstery & Loose Covers
Original Artwork • Hand-crafted Gifts
Haberdashery • Homemade Preserves • Local Honey
Local Fruit Juice • Kent & Sussex Teas & Coffee

SEWING LESSONS with *Can't Sew*

For a **FREE** consultation & measure call
Diane Sergeant on 07814.536173
or visit her at the Tin Shed, Hilltop Farm,
(next to Tea at Hilltop Tearoom)
The Heath, East Malling ME19 6JL
www.enaid-design.co.uk



Pest Control Services

All Pest Problems Dealt With Including:

**Rats Mice Moles Rabbits Insects
Wasps Squirrels
Bee Swarms Removed**

Discreet And Prompt Service
Fully Insured

Andy Pink

01622.884774 or 07761.559744

A D Pink Electrical

Local Family Business

All types of electrical installations

Full rewires to single sockets

Garden and security lighting

Fully insured

NICEIC Part P Domestic Installer

Tel 01622 884774/07761559744

Email: andypink1@aol.com

Some see **equity release**, We see **financial freedom**.

By releasing some of the equity tied up in your home you could have a tax free lump sum to use as you please. From paying off an existing mortgage to giving your grandchildren the head start they deserve, to supplementing your income in retirement, equity release could give you the freedom to experience things you never thought possible.

It's not what you release, it's what you realise.

raquel.vallancey@equityreleasesupermarket.com



**equity release
SUPERMARKET®**

Whatever stage of your equity release journey, I welcome the opportunity to assist.



Raquel Vallancey
07717 582865



Equity release includes lifetime mortgages, retirement mortgages and home reversion plans. To understand their features and risks, ask for a personalised illustration. There will be a fee for expert advice from Equity Release Supermarket, guaranteed not to be more than £995, only payable on the completion of application. Equity Release Supermarket Ltd is authorised and regulated by the Financial Conduct Authority. FCA registered No. 584063.

Sarah Willsey MCFHP MAFHP Foot Health Professional



Mobile Foot Health Professional
service in the comfort of your own home

TREATMENTS

- Corns & calluses
- Hard skin
- Verrucas
- Ingrown toe nails
- Thickened fungal nails
- Cracked heels
- Toe nail cutting and care
- Diabetic and High Risk Foot Care and Advice

PRICES

£38 first appointment
£35 follow up

£33 over 65 first appt
£30 over 65 follow up

Clinic: 01622 438550

Mobile: 07500 041535

Email: sarah@yourhealthyfeet.co.uk

Web: www.yourhealthyfeet.co.uk

To advertise in this
magazine, please
contact Phil Smith on
01622.880.680
[philip.smithsmith@](mailto:philip.smithsmith@btinternet.com)
btinternet.com

*when replying to an advertisement, please mention this
publication*

CHIMNEY SWEEP
Peter Walsh



Hollingbourne based

01622 880958 or 07895 645318
peterchimneysweep@gmail.com

Power Sweeping

ICS Member

Fully Insured

THE HOOK & HATCHET INN



PUB, RESTAURANT,
CAMPSITE & EVENT VENUE



A BEAUTIFUL, ELEGANT & TRADITIONAL FAMILY
PUB AND RESTAURANT IN THE HEART OF THE
MAGNIFICENT HUCKING ESTATE. SURROUNDED
BY WOODLAND AND NATURE YOU CAN BE SURE TO
FEEL RELAXED AND AT EASE WITHIN OUR COSY
INTERIOR AND GROUNDS.

FOOD & DRINKS

WE ARE OPEN 7 DAYS A WEEK FOR BOTH DRINKS AND FOOD,
OUR OPENING HOURS CAN BE FOUND ON THE WEBSITE.
BE SURE TO BOOK AHEAD IF YOU ARE WANTING TO DINE IN
OUR RESTAURANT TO AVOID DISAPPOINTMENT

MONDAYS - BINGO/QUIZ

THURSDAYS - OPEN MIC NIGHT

FRIDAYS - FISH FRIDAYS & TAKEAWAY FISH & CHIPS.

SATURDAYS - 3RD SAT MUSIC QUIZ. LAST SAT BAND NIGHT

WWW.HOOKANDHATCHETPUB.CO.UK

INFO@HOOKANDHATCHETPUB.CO.UK

CHURCH ROAD, HUCKING, ME17 1QT // 01622 880272



CARDWELL PAVILION

**FOR THAT SPECIAL PARTY OR
MEETING. WE CAN CATER
FOR YOUR NEEDS**

Please call
07856.180003

Gary Tickle

**Conservation bricklayer/
builder
All building works
undertaken**

**Specialising in :-
Alterations, chimneys
Brickwork, lime mortar
& flint work**

**Mobile: 07710 096506
Home: 01795 881784**

**Email: Gary-
tickle@outlook.com**

PROUD TO BE SERVING THE
COMMUNITY SINCE 1965



Your fully independent, family owned,
Funeral Directors, serving the local
community with compassion and the highest
standards of service and professionalism.

With our 24-hour emergency service,
we are only a telephone call away.

At the earliest stage possible, you will
speak directly with one of our experienced
Funeral Directors, who will be there to help,
support and guide you through the whole
of the funeral process.

Golden Charter
Funeral Plans

Headcorn Road, Grafty Green, Maidstone,
Kent ME17 2AP.

01622 850840

Email – enquiries@awcourt.com

Website – www.awcourt.com



A.W. Court is a Trading Division of
West & Coe Ltd, 602 Rainham Road South,
Dagenham, Essex RM10 8YP.



The Rectory
St James the Least



My dear Nephew Darren

I was sorry to hear that your church was broken into last week. Since your sound system rivals that of any concert hall and your projection equipment would put most cinemas to shame, it is not surprising that is what they had their sights on. Your bemusement that they never touched your library of recordings is less understandable. I would have thought that few thieves would have been much interested in renditions of 'Shine Jesus, Shine' and other such artistic gems.

It may have been an act of Christian charity to put a sign outside saying 'Thieves will be forgiven', although since they took this as an invitation to burgle your house the following evening, I hope your forgiveness still operates. Especially as they also stole your favourite guitar.

Last year, we had unwelcome visitors. The thieves must have spent several hours breaking down the church's 400-year-old oak door to get in. Shame about that. Had they bothered to try the handle, they would have discovered that we never lock the church anyway.

Since we have yet to leap forward into the 19th century, there was little to attract them. Had they removed the marble sarcophagi of the Earls of Lincombe, the money they may have made wouldn't even have paid for the subsequent hernia operations. Inevitably, there was general outrage that the poor box had been broken into – although as far as I can remember, for many years it had contained nothing more than an old three-penny piece and a button.

For many of our congregation, this represented the End of Civilisation as We Know It. Calls were made to have a permanent armed guard on the premises, and a few even speculated about the possibility of having strategically placed land mines about the place. Mrs Beaufort offered to lend us her fierce Pekingese, and Colonel Beauchamp generously offered us his collection of man traps.

Perhaps our thieves may be forgiven their crime, but until that three-penny piece and button are returned, it will not be forgotten.

Your loving uncle,
Eustace



VILLAGE DIARY

July

3 rd	Garden Society Summer Show	Windmill Pub Hall
9 th /10 th	Hollingbourne in Colour Competition	
10 th	National 'Don't Step on a Bee' Day	
11 th 7.30 pm	Parish Council Meeting	Cardwell Pavilion
19 th 7.30 pm	W.I. Meeting	Windmill Pub Hall

August

6 th	Community Heritage Event	Hollingbourne Station
	No Parish Council Meeting	
29 th	Bank Holiday	

September

3 rd	Garden Society Autumn Show	Windmill Pub Hall
12 th 7.30 pm	Parish Council Meeting	Cardwell Pavilion
20 th 7.30 pm	W.I. Meeting	Windmill Pub Hall
30 th 7.30 pm	W.I. Quiz	Windmill Pub Hall

October

10 th 7.30 pm	Parish Council Meeting	Cardwell Pavilion
18 th 7.30 pm	W.I. Meeting	Windmill Pub Hall
29 th	GMT – Clocks go back	

November

5 th	Bonfire Night	
11 th	Armistice Day	
13 th	Remembrance Sunday	
14 th 7.30 pm	Parish Council Meeting	Cardwell Pavilion
27 th	Advent Sunday	
30 th	St. Andrew's Day	

December

12 th 7.30 pm	Parish Council Meeting	Cardwell Pavilion
24 th	Christmas Eve	
25 th	Christmas Day	
26 th	Bank Holiday	
27 th	Bank Holiday	
31 st	New Year's Eve	

New additions in red.

Please send information for Village Diary and Regular Meetings to

Carole Findlay 01622.583636

hollingbourne.parish.magazine.editor@hotmail.com



Advertising space is sold in good faith. No responsibility can be taken for the quality of goods or services offered.

REGULAR MEETINGS

After school Club:

Schooldays to 6 pm **Cardwell Pavilion**

Bellringing Practice

Mondays 7.30 - 9.30 pm **All Saints Church Tower**

Bourne Musicians (3 months - 5 years):

Fridays 9.30 - 11 am **Village Hall**

Brownies:

Wednesdays 6.00—7.15 pm **Cardwell Pavilion**

Cricket :

Tuesdays 6-7.30 pm **Hollingbourne Cricket Ground**

7.30-8.30/9.00 pm U11-U15 Senior Training

Sundays 10-11 am U9 **Bearsted Green**

Fridays 6.30-8.00 pm Senior Womens/Girls

Cubs:

Fridays 6.30 - 7.45 pm **Kingswood Scout Hut**

Explorers:

Thursdays 7.00 - 9.00 pm **Kingswood Scout Hut**

Hucking WI

3rd Thursday 7.00 pm **Little Budds Farm**

Mobile Library

Wednesdays 11.55 am – 12.25 pm **Village Hall**

Parish Council:

2nd Monday (except August) 7.30 pm **Cardwell Pavilion**

Pilates Classes

Thursday mornings **Village Hall**

Pre-School:

Every School Day 9.15 am – noon **Cardwell Pavilion**

Reading Group :

Monthly **Contact:** Barbara Lloyd 880282
Dawn Perry 880634

School Terms 2022

Term 6: 6th June —22nd July

Term 1: 1st September —21st October

Term 2: 31st October —16th December

Term 3: 3rd January -10th February

Term 4: 20th February – 31st March

Term 5: 17th April -26th May

Term 6: 5th June —21st July

Scouts:

Wednesdays, 7.00 – 9.00 pm **Kingswood Scout Hut**

WI Meetings:

3rd Tuesday (Not August) 7.30 pm **Village Hall**

Carole Findlay at hollingbourne.parish.magazine.editor@hotmail.com

Any opinions expressed in this magazine are those of the writers and do not necessarily reflect the positions of the Editor or Parochial Church Council. We reserve the right to edit, and the right not to print: no reason will be given. Contributions will not be printed anonymously.

BRAEMAR

MORTGAGE SERVICES LIMITED

Local professional mortgage advice and recommendations to include...

Purchases/Re-mortgages/First-Time-Buyers
Buy-To-Let/Let-To-Buy/Right-To-Buy
Commercial Mortgages/Equity Release
Building & Contents/Life Protection
Critical Illness Protection/Income Protection

Please contact GREG on 07956 549488 or

Email: greg@braemarms.co.uk

CeMAP & CeRER qualified

Braemar Mortgage Services Limited is an independent mortgage adviser and registered with the Financial Conduct Authority – FCA No. 495806

Harrietsham Computers

Computer Problems?

Need an upgrade or a new machine?

Just want some extra tuition?

For local, friendly, experienced help, call

Mike Cuerden on 01622-859442 or

07963 020092

No call out fee

Reasonable rates

Private and commercial work

No job too small

Harrietsham Computers



Lenham Ballet School

R.A.D. Ballet

I.S.T.D. Tap & Modern

3 years to senior level

Adult Tap & Street Dance

01622 850329

More than a ballet school

www.lenhamballetschool.co.uk

LEEDS CASTLE

DESIGNED TO ENTERTAIN & AMAZE

PAY ONCE
VISIT FREE
ALL YEAR



WWW.LEEDS-CASTLE.COM

ELITE'S SUMMER WEEKEND OF MUSIC!



FIND OUT MORE
ELITEPUBS.COM